



City of Edmonds Master Sign Program

➤ D E S I G N I N T E N T D R A W I N G S

- WAYFINDING
- PUBLIC PARKING
- PARKS & RECREATION



F O R M A
114 4th Ave N.
Edmonds, WA.
98020

Project:

City of Edmonds
Master Planned
Signage Program

Location:

City of Edmonds

Owner:

City of Edmonds

Designer

Clayton Moss

Cmoss@FormaSeattle.com

Direct Line: 425. 775. 2442

Fax Line: 425. 775. 2817

The objective of these drawings is to define the overall design intent for fabricator's understanding and estimation purposes. These drawings are only for City of Edmonds sign projects.

Notes:

- 1.Written dimensions take precedence over scale.
2. It is the responsibility of the sign bidder/fabricator to thoroughly examine all drawings, review site conditions, and notify the designer and owner of any errors, omissions, or discrepancies prior to bid submittal and start of production.
3. Concrete footing, engineering specifications and installation-by owner no bid required.
4. Final Artwork for logo provided by FORMA.

Publish Date: 4.29.12



FORMA

114 4th Ave N.
Edmonds, WA.
98020

Project:
City of Edmonds
Master Planned
Signage Program

Location:
City of Edmonds

Owner:
City of Edmonds

Designer

Clayton Moss
Cmoss@FormaSeattle.com

Direct Line: 425. 775. 2442
Fax Line: 425. 775. 2817

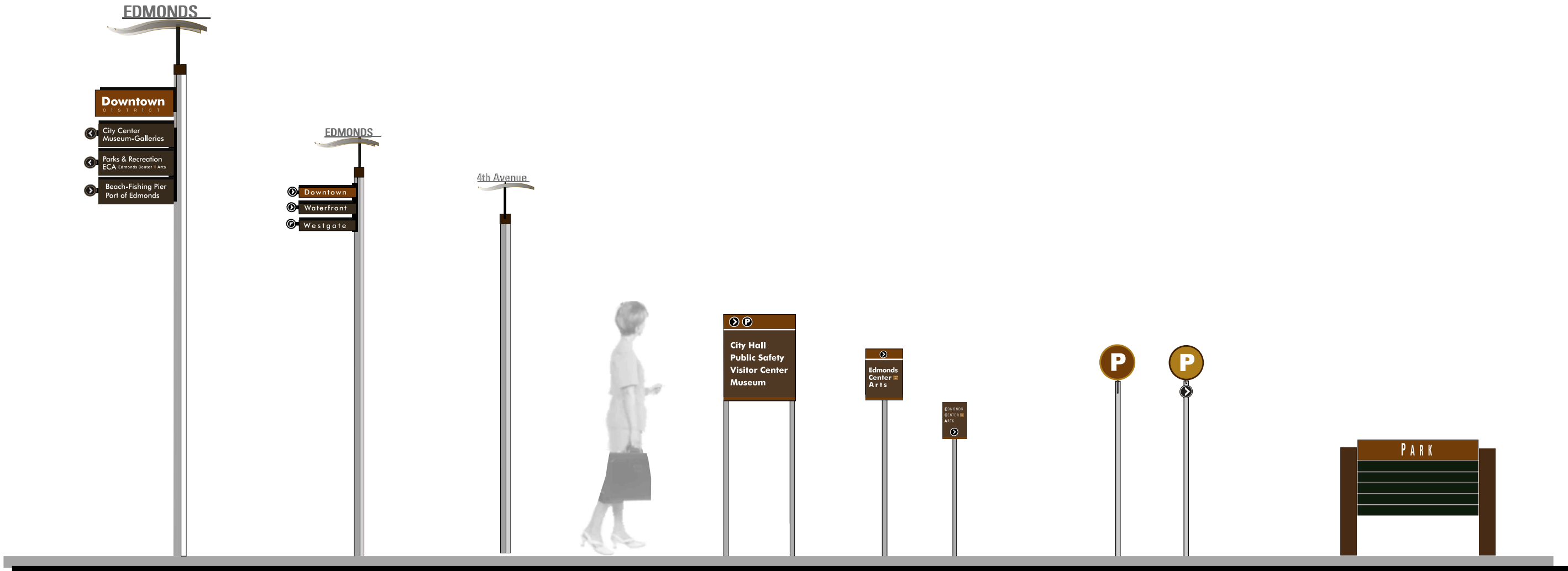
The objective of these drawings is to define the overall design intent for fabricator's understanding and estimation purposes. These drawings are only for City of Edmonds sign projects.

Notes:

1. Written dimensions take precedence over scale.
2. It is the responsibility of the sign bidder/fabricator to thoroughly examine all drawings, review site conditions, and notify the designer and owner of any errors, omissions, or discrepancies prior to bid submittal and start of production.
3. Concrete footing, engineering specifications and installation-by owner no bid required.
4. Final Artwork for logo provided by FORMA.

Publish Date: 4.29.12

Sheet 02



P-Dr.1

S-Dr.1

St-ID.1

M-Dr.1

M-Dr.2

M-Dr.3

P-ID.1

P-Dr.2

P&R

PRIMARY DIRECTIONAL

SECONDARY DIRECTIONAL

UNIQUE 4TH AVE ID (CULTURAL CORRIDOR)

MISC. DIRECTIONAL

PUBLIC PARKING: ID & DIRECTIONAL

PARKS & RECREATION



FORMA
114 4th Ave N.
Edmonds, WA.
98020

Project:

City of Edmonds
Master Planned
Signage Program

Location:

City of Edmonds

Owner:

City of Edmonds

Designer

Clayton Moss

Cmoss@FormaSeattle.com

Direct Line: 425, 775, 2442

Fax Line: 425, 775, 2817

The objective of these drawings is to define the overall design intent for fabricator's understanding and estimation purposes. These drawings are only for City of Edmonds sign projects.

Notes:

- 1.Written dimensions take precedence over scale.
2. It is the responsibility of the sign bidder/fabricator to thoroughly examine all drawings, review site conditions, and notify the designer and owner of any errors, omissions, or discrepancies prior to bid submittal and start of production.
3. Concrete footing, engineering specifications and installation-by owner no bid required.
4. Final Artwork for logo provided by FORMA.

Publish Date: 4.29.12

Phase I
Preliminary sign location plan



Phase I
Paint & Vinyl Film Specifications

Vinyl Specifications :
Brand Names: Avery, 3M/Gerber

- V.1 3M Reflective White
- V.2 3M Harvest Gold
- V.3 3M Reflective (Russet) Brown
- V.4 3M Duranodic
- V.5 3M Matte Black
- V.6 Avery Polo Green
- V.7 3M Satin Aluminum
- V.8 Avery Cocoa A 8278-O
- V.9 3M Copper
- V.P Vinyl Print; Digital 3M









Water based Paints :
Brand Name: Sherwin / Williams

Sign Post Accent: Jasper green
Sign Post Base: Andiron- med. brown

Polyurathane Paints

F-1 Paint: Mathews Brand: primer & finish.
Color: Satin Silver Metallic # 18082
F-2 Optional: Clear coat over
natural aluminum

Note:
Sites for unique gateway signage
are identified in the Streetscape Plan
and are not included in this Sign Program.

Key/Smbols	Sign Type	Phase 1 Locations
 P-DR	Primary Directional -	@ SR 104 & Dayton St.
 S-DR	Secondary Directional	@ Casper St. & 9th Ave. N @ Main St. & 9th Ave N.
 M-DR	Misc. Directional	@ 3rd Ave. N. & Bell
 S-ID	Street Identification	@ 4th Ave N. & 3rd Ave N.
 P.ID	Public Parking Entry ID	@ Driveway entry, as indicated
 P.Dr	Public Parking Directional	@ various locations, as indicated
 P&R-ID	Park Identification	@ Sierra Park Entry (not shown)
 P&R-FAC	Frances Anderson Center	@ Main St. primary entrance



P-Dr.1

P R I M A R Y D I R E C T I O N A L



F O R M A

114 4th Ave N.
Edmonds, WA.
98020

Project:

City of Edmonds
Master Planned
Signage Program

Location:

City of Edmonds

Owner:

City of Edmonds

Designer

Clayton Moss

Cmoss@FormaSeattle.com

Direct Line: 425, 775, 2442

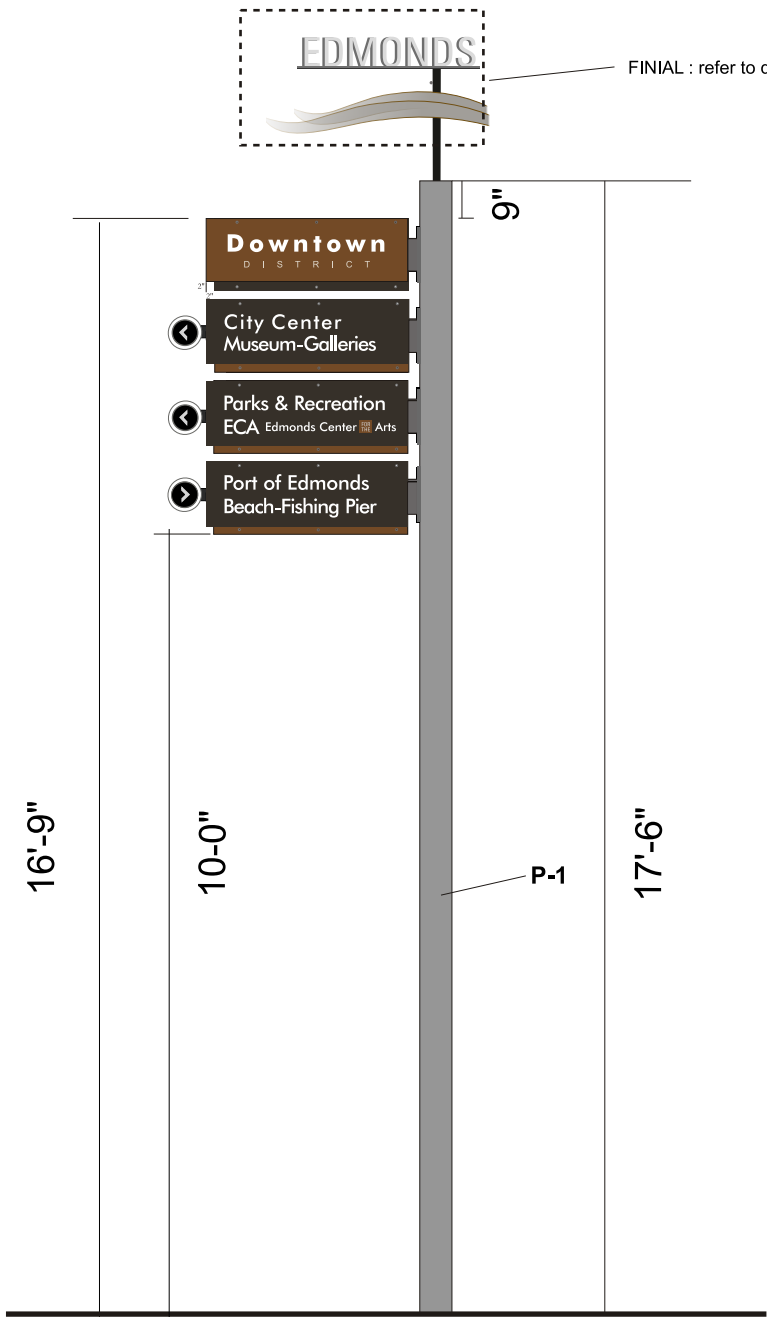
Fax Line: 425, 775, 2817

The objective of these drawings is to define the overall design intent for fabricator's understanding and estimation purposes. These drawings are only for City of Edmonds sign projects.

Notes:

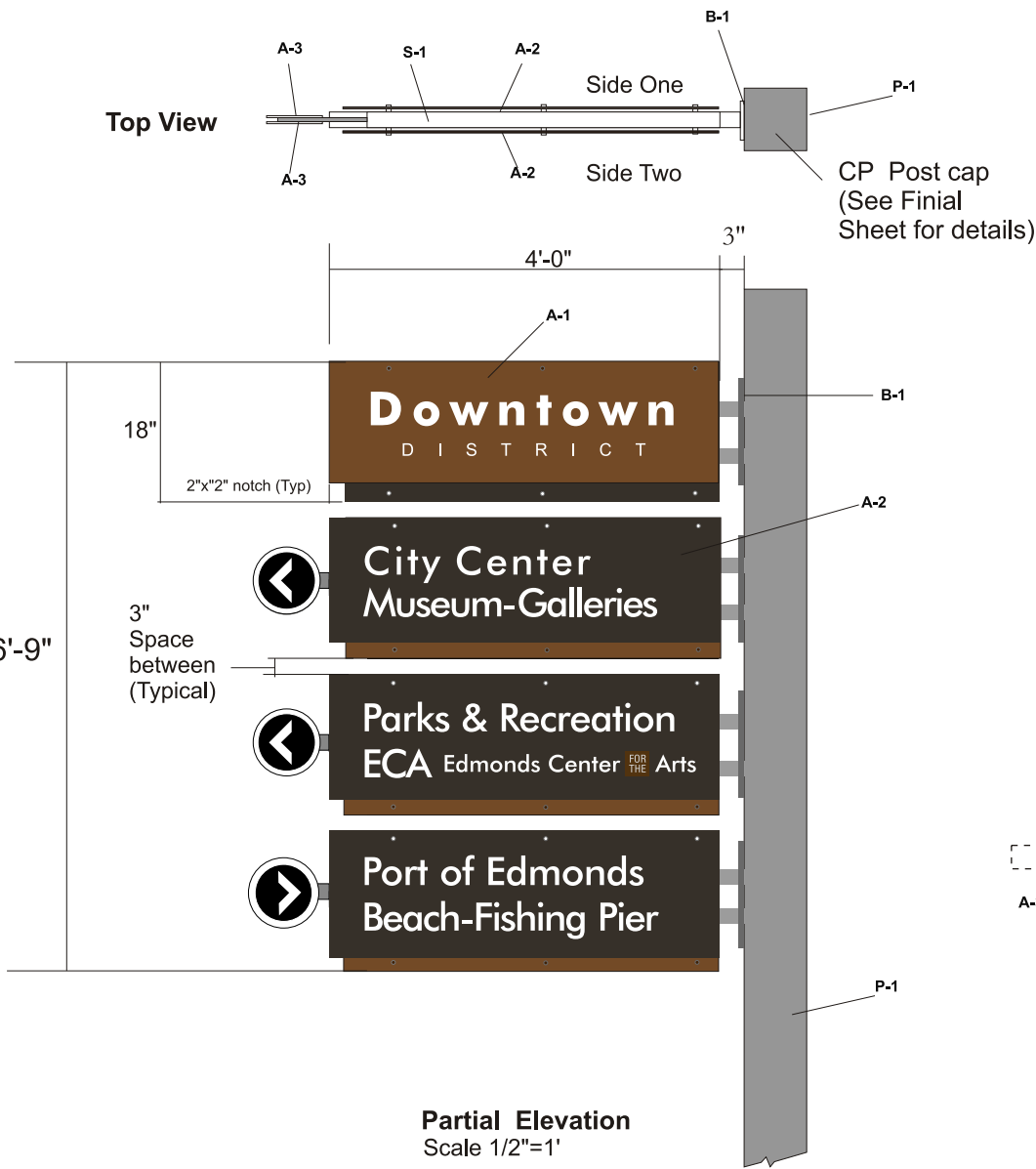
- 1.Written dimensions take precedence over scale.
2. It is the responsibility of the sign bidder/fabricator to thoroughly examine all drawings, review site conditions, and notify the designer and owner of any errors, omissions, or discrepancies prior to bid submittal and start of production.
3. Concrete footing, engineering specifications and installation-by owner no bid required.
4. Final Artwork for logo provided by FORMA.

Publish Date: 4.29.12



Elevation

Post & Framework

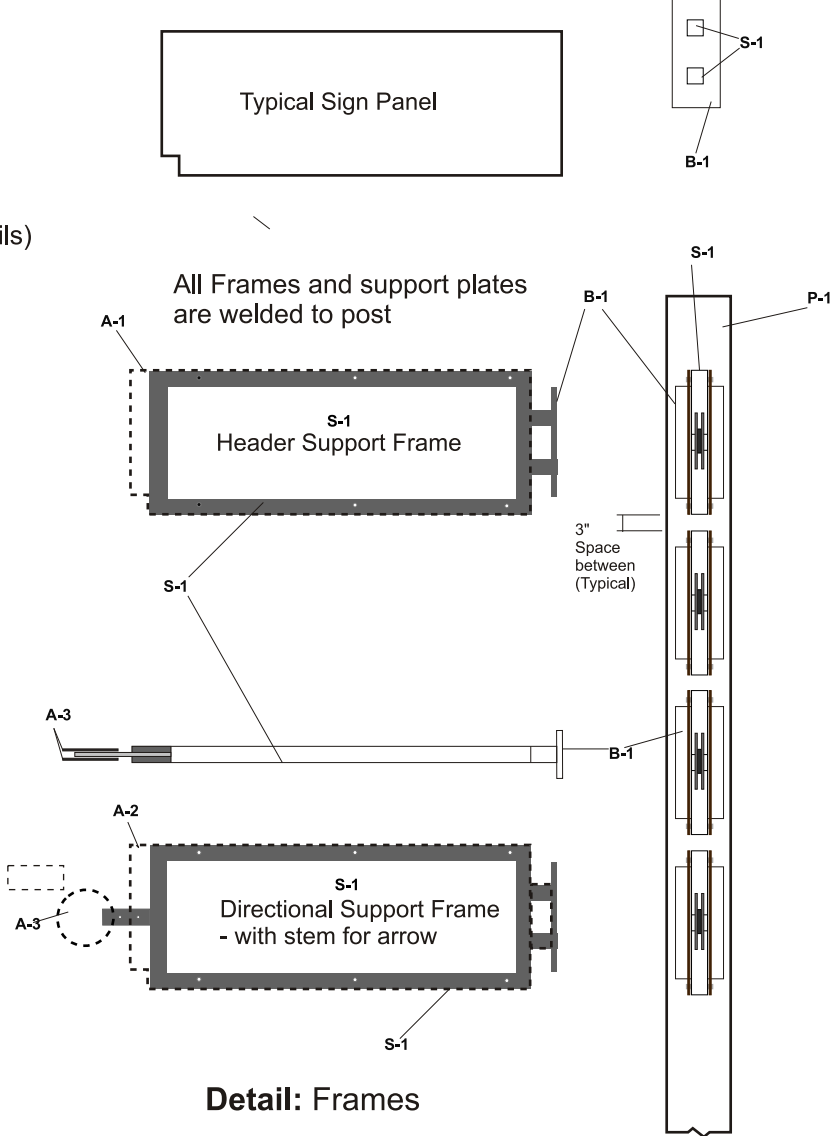


Partial Elevation
Scale 1/2"=1'

NOTE:
Final copy will be
determined by the City of Edmonds

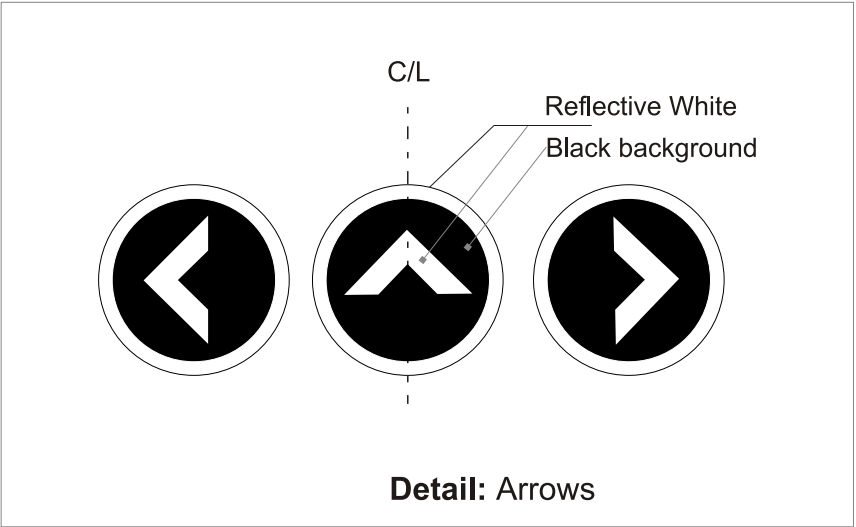
ITEM / PART	MATERIAL
P-1	PRIMARY SIGN POST
S-1	SIGN FRAME /SUPPORT
B-1	BRACKET / MOUNTING PLATE
A-1	SIGN PANEL - Header
A-2	SIGN PANEL - Secondary Copy
A-3	ARROW CIRCLE
CP	COVER PLATE

NOTES:	
1. All exposed aluminum to be sanded smooth, non-directional finish.	6. All visible metal to be aluminum -unless otherwise noted.
2. Paint: Mathews Brand: primer & finish. Color: Satin Silver Metallic # 18082	7. All lettering & graphics vinyl -unless otherwise noted.
Optional: Clear coat	8. Visible bolt heads on sign panels to be covered with vinyl or touch up paint color to match.)
3. Submittal Samples must be approved prior to painting.	
4. All hardware to be engineer approved non-corrosive:galv. or stainless steel	NOTE: Fabricator to adhere to design intent. Must submit shop drawing for approval by the City of Edmonds prior to start of production.
5. Written dimensions take precedence over scale	



Detail: Frames

End View Scale 1/2"=1'



Detail: Arrows



F O R M A

114 4th Ave N.
Edmonds, WA.
98020

Project:

City of Edmonds
Master Planned
Signage Program

Location:

City of Edmonds

Owner:

City of Edmonds

Designer

Clayton Moss

Cmoss@FormaSeattle.com

Direct Line: 425. 775. 2442

Fax Line: 425. 775. 2817

The objective of these drawings is to define the overall design intent for fabricator's understanding and estimation purposes. These drawings are only to be used for City of Edmonds sign projects.

General Notes:

- Written dimensions shall take precedence over scale.
- It is the responsibility of the sign bidder/fabricator to thoroughly examine all drawings, review site conditions, and notify the designer and owner of any errors, omissions, or discrepancies- prior to bid submittal and start of production.
- Concrete footing, structural engineering and installation the owner: City of Edmonds. .
- Final Artwork for logo provided by FORMA.

Publish Date: 4.29.12

Sheet 05



FORMA

114 4th Ave N.
Edmonds, WA.
98020

Project:

City of Edmonds
Master Planned
Signage Program

Location:

City of Edmonds

Owner:

City of Edmonds

Designer

Clayton Moss

Cmoss@FormaSeattle.com

Direct Line: 425. 775. 2442

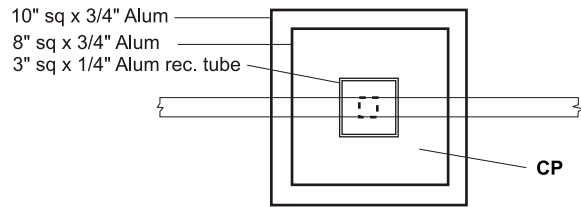
Fax Line: 425. 775. 2817

The objective of these drawings is to define the overall design intent for fabricator's understanding and estimation purposes. These drawings are only for City of Edmonds sign projects.

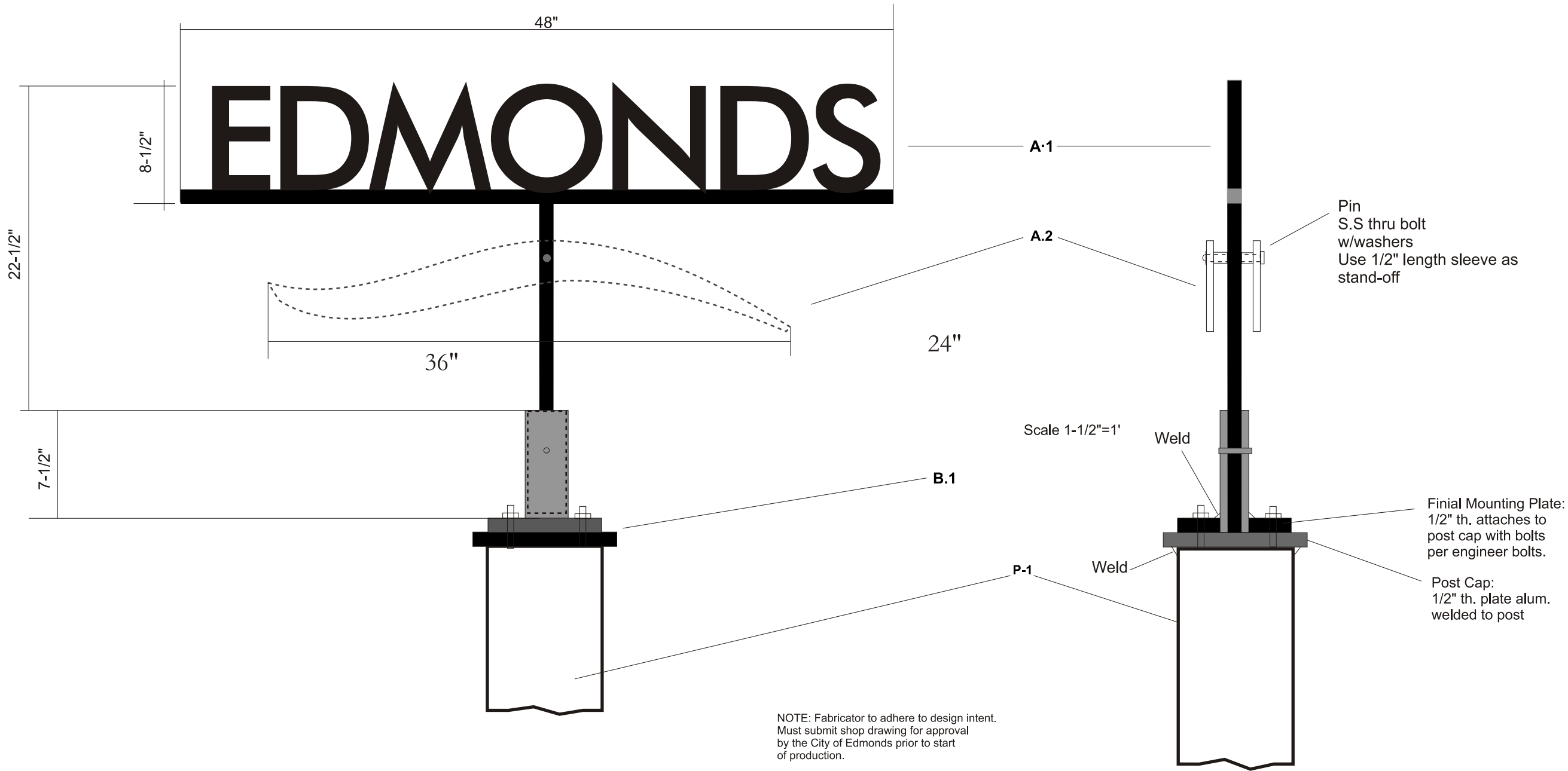
Notes:

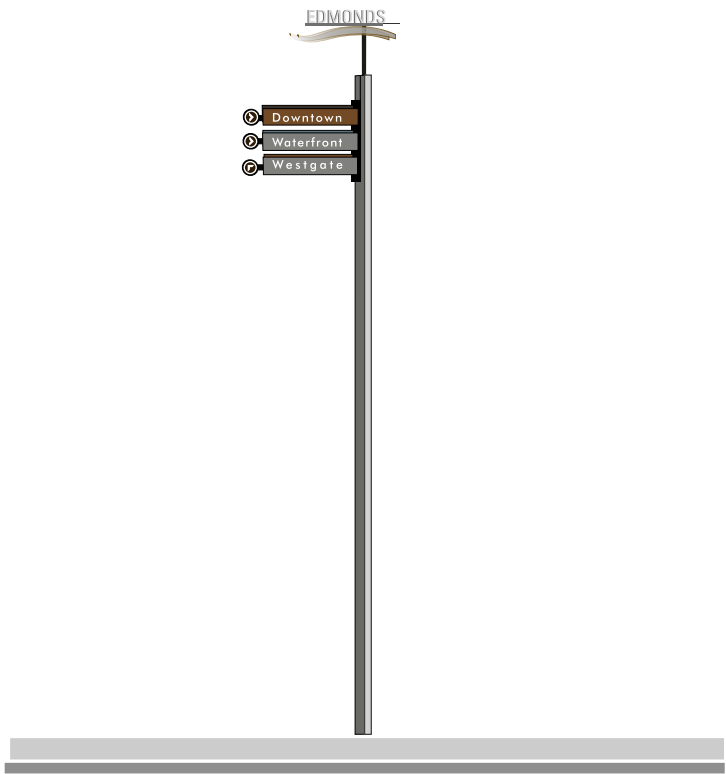
1. Written dimensions take precedence over scale.
2. It is the responsibility of the sign bidder/fabricator to thoroughly examine all drawings, review site conditions, and notify the designer and owner of any errors, omissions, or discrepancies prior to bid submittal and start of production.
3. Concrete footing, engineering specifications and installation-by owner no bid required.
4. Final Artwork for logo provided by FORMA.

Publish Date: 4.29.12



Top View of Cap Plate





S E C O N D A R Y D I R E C T I O N A L



F O R M A

114 4th Ave N.
Edmonds, WA.
98020

Project:

City of Edmonds
Master Planned
Signage Program

Location:

City of Edmonds

Owner:

City of Edmonds

Designer

Clayton Moss

Cmoss@FormaSeattle.com

Direct Line: 425, 775, 2442

Fax Line: 425, 775, 2817

The objective of these drawings is to define the overall design intent for fabricator's understanding and estimation purposes. These drawings are only for City of Edmonds sign projects.

Notes:

- 1.Written dimensions take precedence over scale.
2. It is the responsibility of the sign bidder/fabricator to thoroughly examine all drawings, review site conditions, and notify the designer and owner of any errors, omissions, or discrepancies prior to bid submittal and start of production.
3. Concrete footing, engineering specifications and installation-by owner no bid required.
4. Final Artwork for logo provided by FORMA.

Publish Date: 4.29.12



FORMA
114 4th Ave N.
Edmonds, WA.
98020

Project:

City of Edmonds
Master Planned
Signage Program

Location:

City of Edmonds

Owner:

City of Edmonds

Designer

Clayton Moss

Cmoss@FormaSeattle.com

Direct Line: 425. 775. 2442

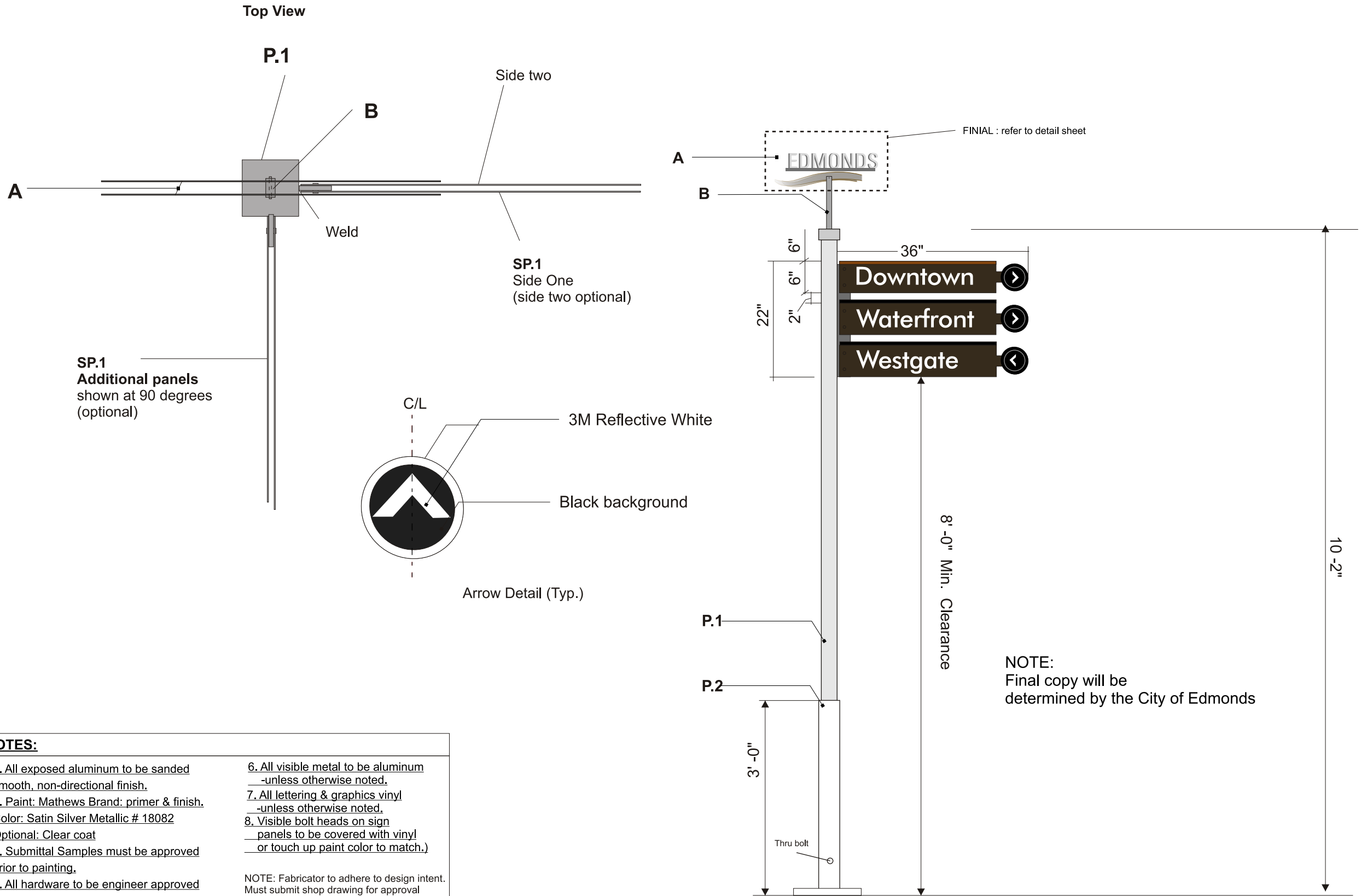
Fax Line: 425. 775. 2817

The objective of these drawings is to define the overall design intent for fabricator's understanding and estimation purposes. These drawings are only for City of Edmonds sign projects.

Notes:

1. Written dimensions take precedence over scale.
2. It is the responsibility of the sign bidder/fabricator to thoroughly examine all drawings, review site conditions, and notify the designer and owner of any errors, omissions, or discrepancies prior to bid submittal and start of production.
3. Concrete footing, engineering specifications and installation-by owner no bid required.
4. Final Artwork for logo provided by FORMA.

Publish Date: 4.29.12



NOTES:	
1. All exposed aluminum to be sanded smooth, non-directional finish.	6. All visible metal to be aluminum -unless otherwise noted.
2. Paint: Mathews Brand: primer & finish. Color: Satin Silver Metallic # 18082 Optional: Clear coat	7. All lettering & graphics vinyl -unless otherwise noted.
3. Submittal Samples must be approved prior to painting.	8. Visible bolt heads on sign panels to be covered with vinyl or touch up paint color to match.)
4. All hardware to be engineer approved non-corrosive;galv. or stainless steel	NOTE: Fabricator to adhere to design intent. Must submit shop drawing for approval by the City of Edmonds prior to start of production.
5. Written dimensions take precedence over scale	



FORMA

114 4th Ave N.
Edmonds, WA.
98020

Project:

City of Edmonds
Master Planned
Signage Program

Location:

City of Edmonds

Owner:

City of Edmonds

Designer

Clayton Moss

Cmoss@FormaSeattle.com

Direct Line: 425, 775, 2442

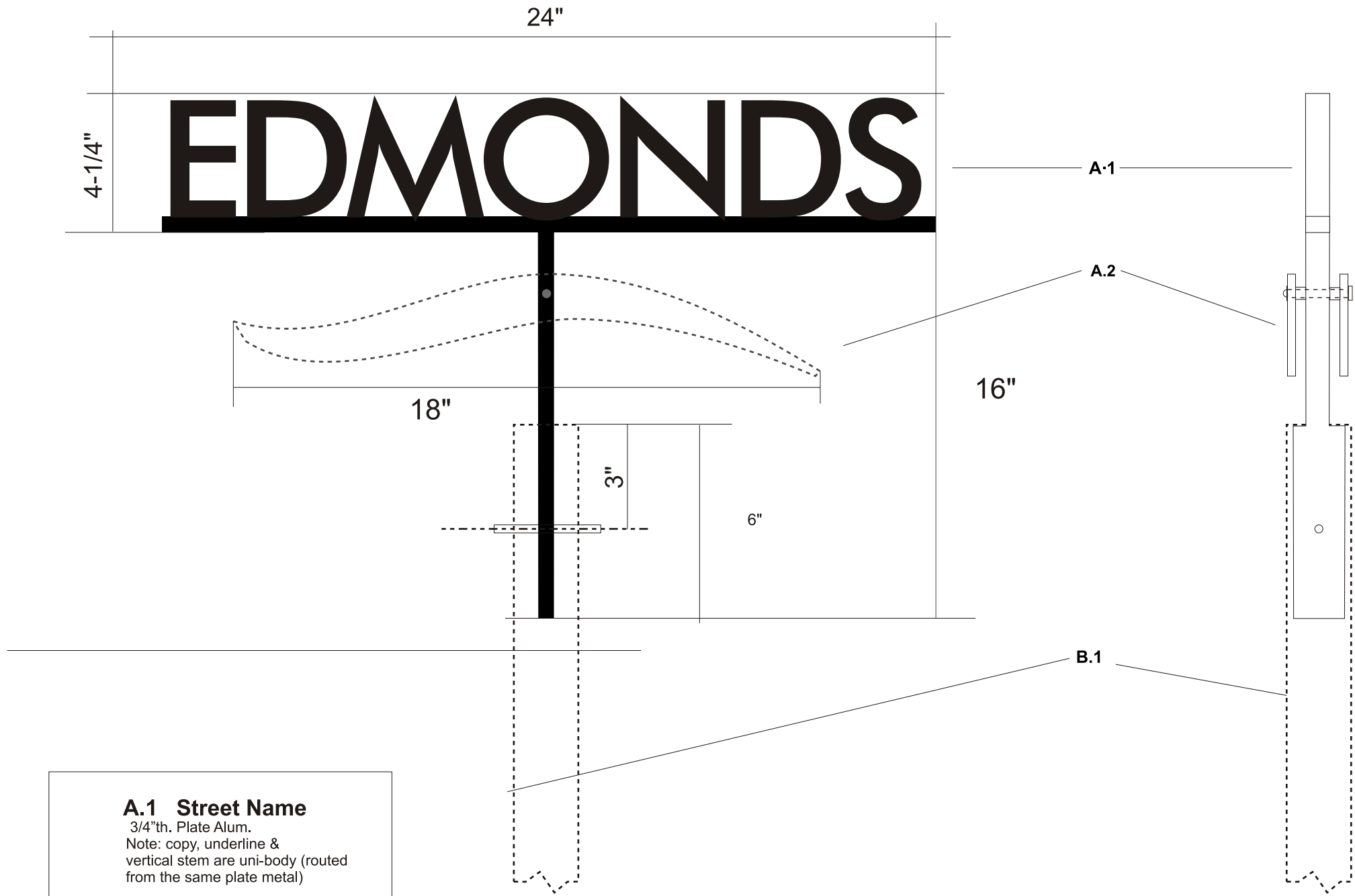
Fax Line: 425, 775, 2817

The objective of these drawings is to define the overall design intent for fabricator's understanding and estimation purposes. These drawings are only for City of Edmonds sign projects.

Notes:

1. Written dimensions take precedence over scale.
2. It is the responsibility of the sign bidder/fabricator to thoroughly examine all drawings, review site conditions, and notify the designer and owner of any errors, omissions, or discrepancies prior to bid submittal and start of production.
3. Concrete footing, engineering specifications and installation-by owner no bid required.
4. Final Artwork for logo provided by FORMA.

Publish Date: 4.29.12



A.1 Street Name

3/4"th. Plate Alum.

Note: copy, underline & vertical stem are uni-body (routed from the same plate metal)

A.2 "Waves"

2 Qty (one per side)
wave shape routed from 1/4"
plate aluminum.

B.1 Post

2" x 2" x 1/8" Aluminum

NOTE: Fabricator to adhere to design intent.
Must submit shop drawing for approval
by the City of Edmonds prior to start
of production.



FORMA

114 4th Ave N.
Edmonds, WA.
98020

Project:

City of Edmonds
Master Planned
Signage Program

Location:

City of Edmonds

Owner:

City of Edmonds

Designer

Clayton Moss

Cmoss@FormaSeattle.com

Direct Line: 425. 775. 2442

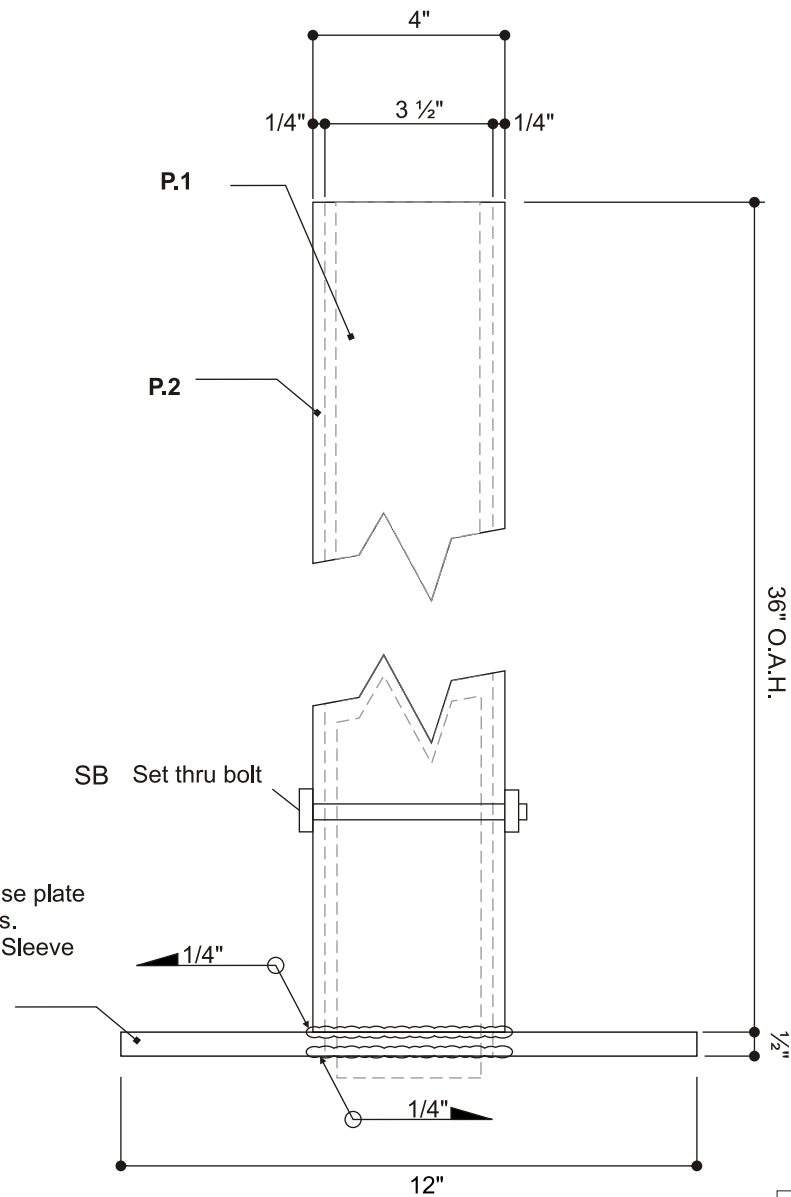
Fax Line: 425. 775. 2817

The objective of these drawings is to define the overall design intent for fabricator's understanding and estimation purposes. These drawings are only for City of Edmonds sign projects.

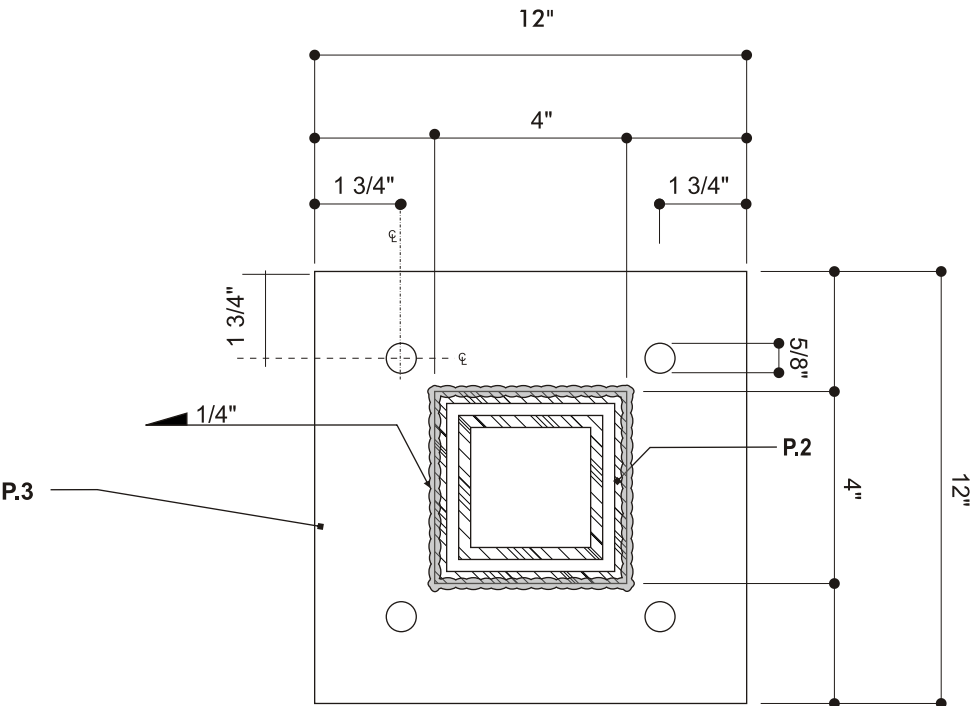
- Notes:
1. Written dimensions take precedence over scale.
 2. It is the responsibility of the sign bidder/fabricator to thoroughly examine all drawings, review site conditions, and notify the designer and owner of any errors, omissions, or discrepancies prior to bid submittal and start of production.
 3. Concrete footing, engineering specifications and installation-by owner no bid required.
 4. Final Artwork for logo provided by FORMA.

Publish Date: 4.29.12

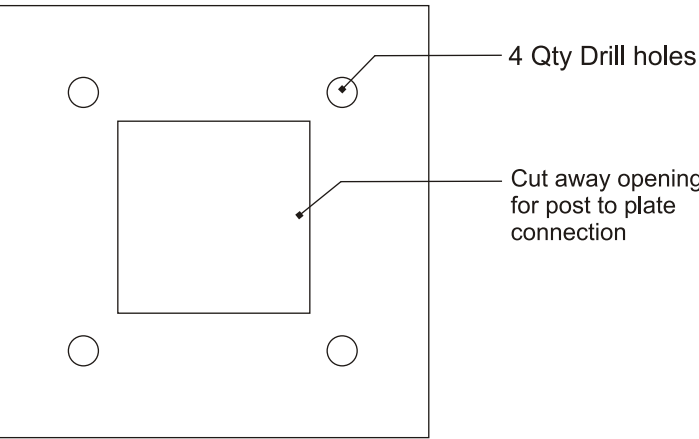
Sheet 10



P.3 1/2" x 12" x 12" Alum. base plate
5/8" dia. holes drill holes.
Plate is welded to Post Sleeve



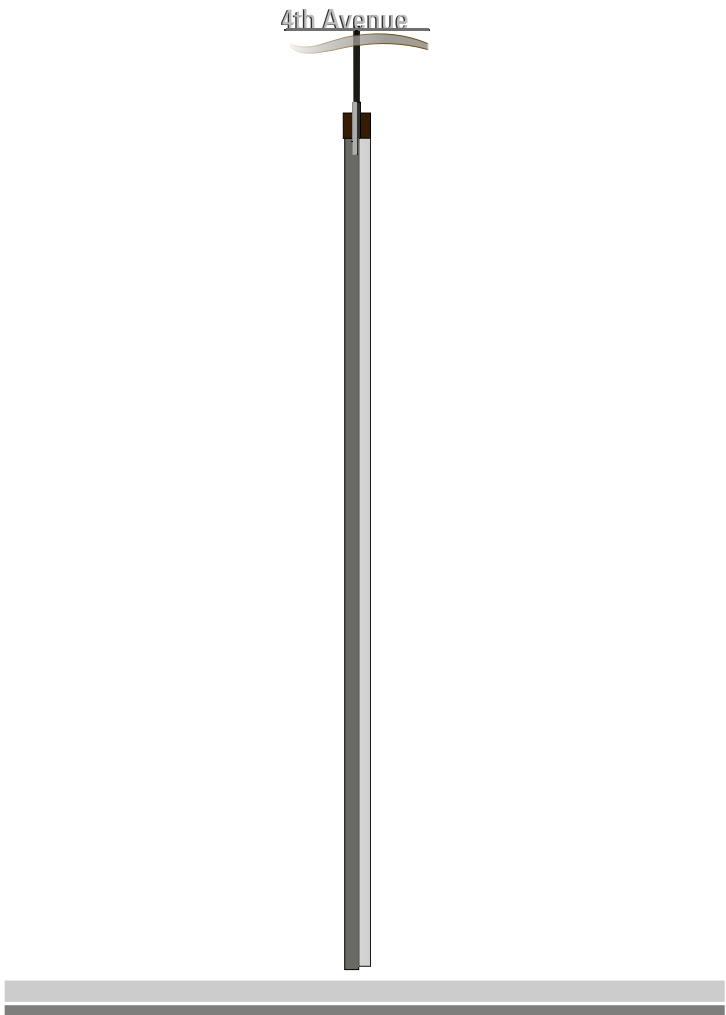
Detail Base plate
Base plate
welded to post sleeve



Notes

1. Primary post is slotted for insertion of the center blade-center blade is then welded to the post.
2. Directional panels are attached to the center blade with tamper resistant screws. Directional panels are removable
3. P.2/P.3 Sleeve/Plate assembly is attached to existing concrete with anchor bolts (Spec. TBD by engineer).
4. SB - Set thru bolt per engineer spec.

NOTE: Fabricator to adhere to design intent.
Must submit shop drawing for approval
by the City of Edmonds prior to start
of production.



S T R E E T I D : 4 T H A V E
UNIQUE 4TH AVE ID (AT CULTURAL CORRIDOR)



F O R M A

114 4th Ave N.
Edmonds, WA.
98020

Project:

City of Edmonds
Master Planned
Signage Program

Location:

City of Edmonds

Owner:

City of Edmonds

Designer

Clayton Moss

Cmoss@FormaSeattle.com

Direct Line: 425, 775, 2442

Fax Line: 425, 775, 2817

The objective of these drawings is to define the overall design intent for fabricator's understanding and estimation purposes. These drawings are only for City of Edmonds sign projects.

Notes:

- 1.Written dimensions take precedence over scale.
2. It is the responsibility of the sign bidder/fabricator to thoroughly examine all drawings, review site conditions, and notify the designer and owner of any errors, omissions, or discrepancies prior to bid submittal and start of production.
3. Concrete footing, engineering specifications and installation-by owner no bid required.
4. Final Artwork for logo provided by FORMA.

Publish Date: 4.29.12



FORMA

114 4th Ave N.
Edmonds, WA.
98020

Project:

City of Edmonds
Master Planned
Signage Program

Location:

City of Edmonds

Owner:

City of Edmonds

Designer

Clayton Moss

Cmoss@FormaSeattle.com

Direct Line: 425. 775. 2442

Fax Line: 425. 775. 2817

The objective of these drawings is to define the overall design intent for fabricator's understanding and estimation purposes. These drawings are only for City of Edmonds sign projects.

Notes:

- 1.Written dimensions take precedence over scale.
2. It is the responsibility of the sign bidder/fabricator to thoroughly examine all drawings, review site conditions, and notify the designer and owner of any errors, omissions, or discrepancies prior to bid submittal and start of production.
3. Concrete footing, engineering specifications and installation-by owner no bid required.
4. Final Artwork for logo provided by FORMA.

Publish Date: 4.29.12

A.1 Street Name
1/4"th. Routed Plate Alum.

A.2 "Waves"
1/8" Plate Alum.

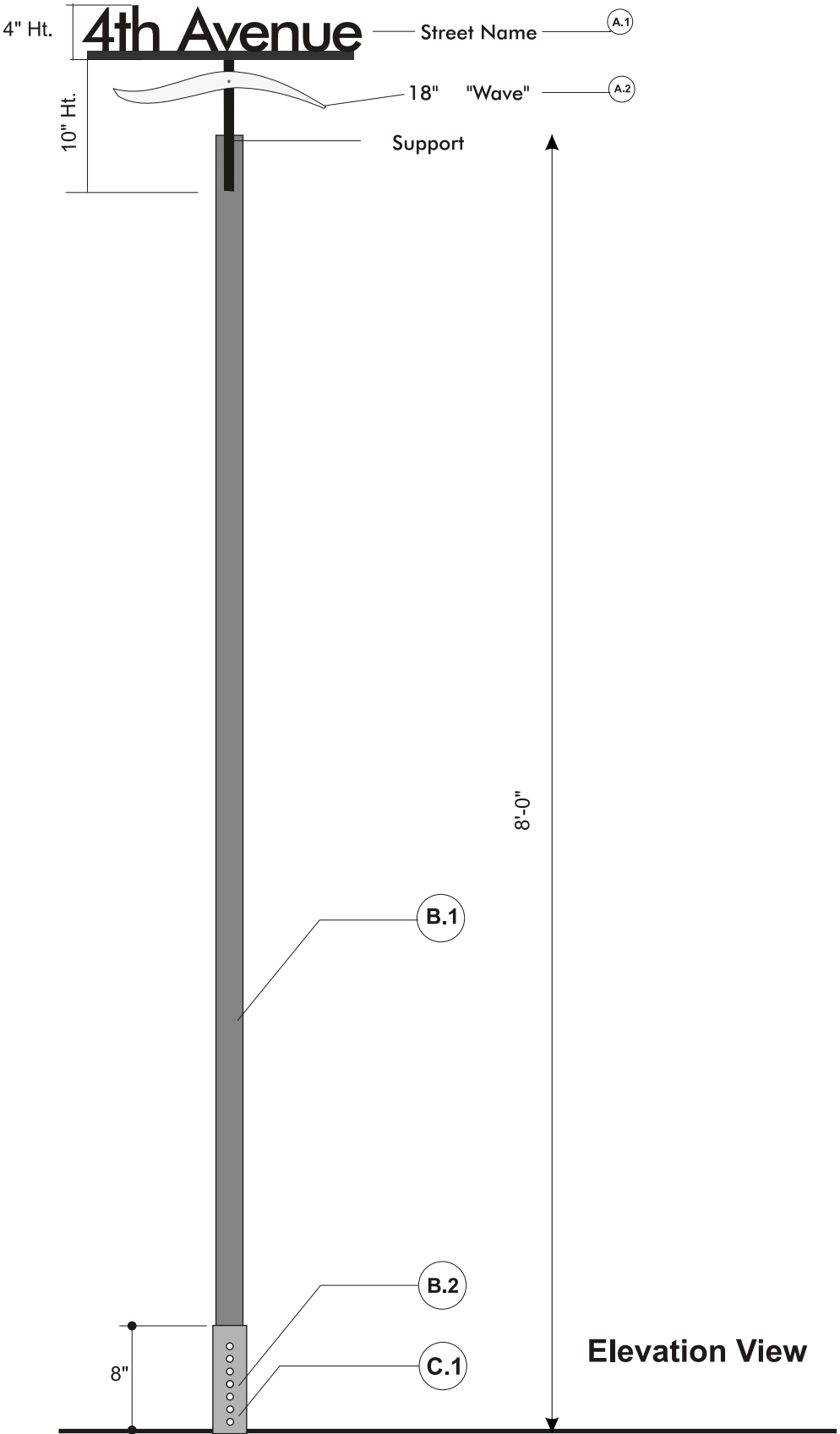
B.1 Post
2" x 2" x 1/8" Aluminum

B.2 Post Sleeve
Per City of Edmonds standards

C.1 Attachments
Ground Mount
Per City of Edmonds standards

F-1 All exposed aluminum to be sanded smooth, non-directional grain-finished with poly-urathane clear coat (spray application)
Brand: Mathews Paint, or approved equal or better.
Exceptions: Hardware & C.1 base sleeve
Note: C.1 painted silver

NOTE: Fabricator to adhere to design intent. Must submit shop drawing for approval by the City of Edmonds prior to start of production.





FORMA
114 4th Ave N.
Edmonds, WA.
98020

Project:
City of Edmonds
Master Planned
Signage Program

Location:
City of Edmonds

Owner:
City of Edmonds

Designer

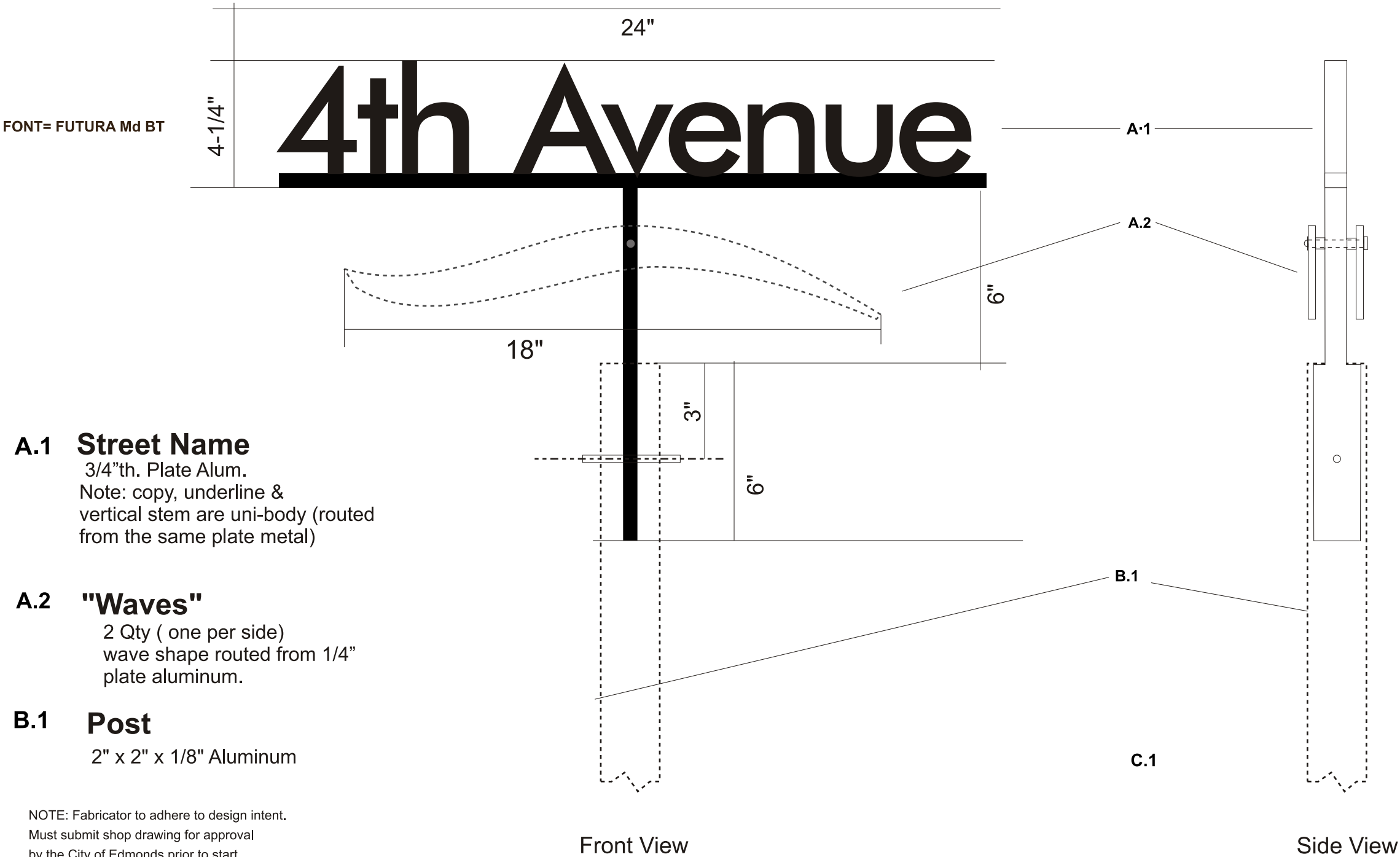
Clayton Moss
Cmoss@FormaSeattle.com
Direct Line: 425. 775. 2442
Fax Line: 425. 775. 2817

The objective of these drawings is to define the overall design intent for fabricator's understanding and estimation purposes. These drawings are only for City of Edmonds sign projects.

Notes:

- 1.Written dimensions take precedence over scale.
2. It is the responsibility of the sign bidder/fabricator to thoroughly examine all drawings, review site conditions, and notify the designer and owner of any errors, omissions, or discrepancies prior to bid submittal and start of production.
3. Concrete footing, engineering specifications and installation-by owner no bid required.
4. Final Artwork for logo provided by FORMA.

Publish Date: 4.29.12

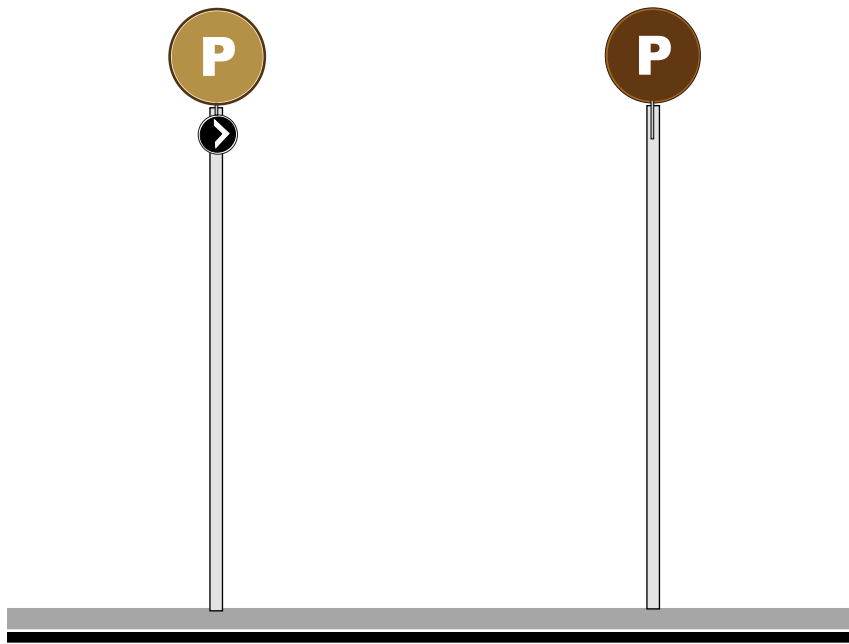


A.1 Street Name
3/4"th. Plate Alum.
Note: copy, underline & vertical stem are uni-body (routed from the same plate metal)

A.2 "Waves"
2 Qty (one per side)
wave shape routed from 1/4" plate aluminum.

B.1 Post
2" x 2" x 1/8" Aluminum

NOTE: Fabricator to adhere to design intent.
Must submit shop drawing for approval by the City of Edmonds prior to start of production.



Directional with Arrow

Parking Lot ID

P U B L I C P A R K I N G



F O R M A

114 4th Ave N.
Edmonds, WA.
98020

Project:

City of Edmonds
Master Planned
Signage Program

Location:

City of Edmonds

Owner:

City of Edmonds

Designer

Clayton Moss

Cmoss@FormaSeattle.com

Direct Line: 425, 775, 2442

Fax Line: 425, 775, 2817

The objective of these drawings is to define the overall design intent for fabricator's understanding and estimation purposes. These drawings are only for City of Edmonds sign projects.

Notes:

- 1.Written dimensions take precedence over scale.
2. It is the responsibility of the sign bidder/fabricator to thoroughly examine all drawings, review site conditions, and notify the designer and owner of any errors, omissions, or discrepancies prior to bid submittal and start of production.
3. Concrete footing, engineering specifications and installation-by owner no bid required.
4. Final Artwork for logo provided by FORMA.

Publish Date: 4.29.12



Project:

Location:**Owner:**

Designer

Cmoss@FormaSeattle.com

Fax Line: 425.775.2817

Notes:

Publish Date: 4.29.12

Sheet 16



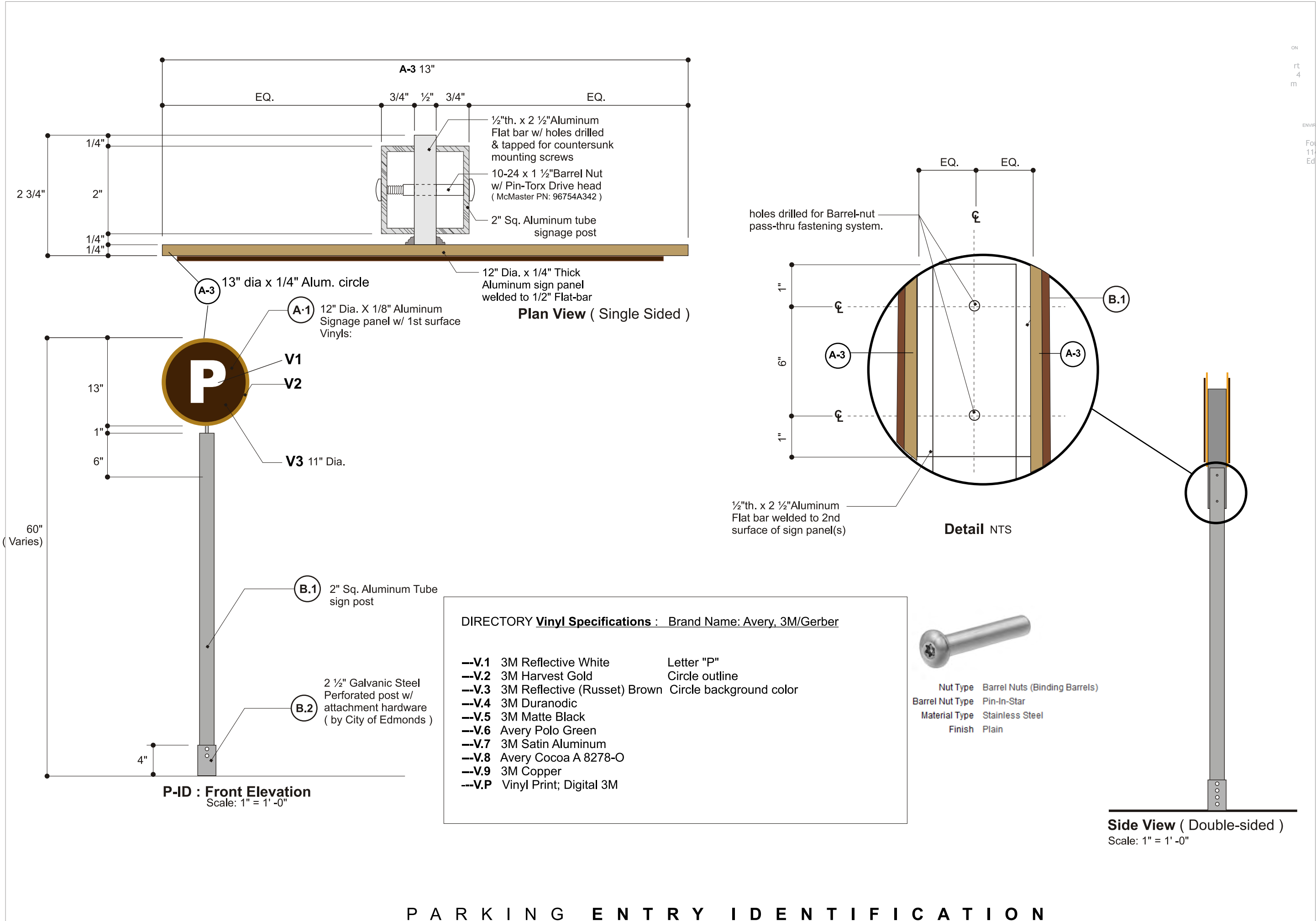
Vinyl Specifications :

Brand Names: Avery, 3M/Gerber

- V.1 3M Reflective White
- V.2 3M Harvest Gold
- V.3 3M Reflective (Russet) Brown
- V.4 3M Duranodic
- V.5 3M Matte Black
- V.6 Avery Polo Green
- V.7 3M Satin Aluminum
- V.8 Avery Cocoa A 8278-O
- V.9 3M Copper
- V.P Vinyl Print; Digital 3M



P A R K I N G D I R E C T I O N A L



FORMA

114 4th Ave N.
Edmonds, WA.
98020

Project:

City of Edmonds
Master Planned
Signage Program

Location:

City of Edmonds

Owner:

City of Edmonds

Designer

Clayton Moss

Cmoss@FormaSeattle.com

Direct Line: 425. 775. 2442

Fax Line: 425. 775. 2817

The objective of these drawings is to define the overall design intent for fabricator's understanding and estimation purposes. These drawings are only for City of Edmonds sign projects.

Notes:

1. Written dimensions take precedence over scale.
2. It is the responsibility of the sign bidder/fabricator to thoroughly examine all drawings, review site conditions, and notify the designer and owner of any errors, omissions, or discrepancies prior to bid submittal and start of production.
3. Concrete footing, engineering specifications and installation-by owner no bid required.
4. Final Artwork for logo provided by FORMA.

Publish Date: 4.29.12

Sheet 15



FORMA
114 4th Ave N.
Edmonds, WA.
98020

Project:

City of Edmonds
Master Planned
Signage Program

Location:

City of Edmonds

Owner:

City of Edmonds

Designer

Clayton Moss
Cmoss@FormaSeattle.com
Direct Line: 425. 775. 2442
Fax Line: 425. 775. 2817

The objective of these drawings is to define the overall design intent for fabricator's understanding and estimation purposes. These drawings are only for City of Edmonds sign projects.

Notes:

1.Written dimensions take precedence over scale.

2. It is the responsibility of the sign bidder/fabricator to thoroughly examine all drawings, review site conditions, and notify the designer and owner of any errors, omissions, or discrepancies prior to bid submittal and start of production.

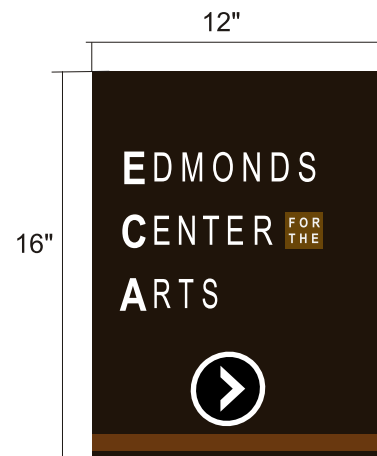
3. Concrete footing, engineering specifications and installation-by owner no bid required.

4. Final Artwork for logo provided by FORMA.

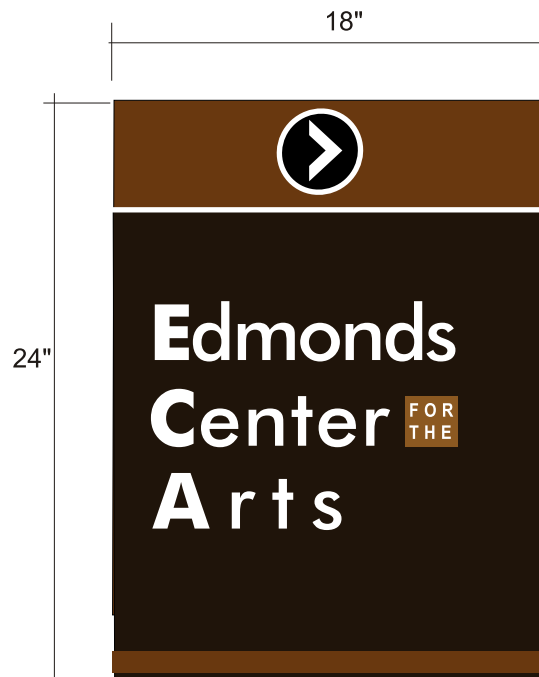
Publish Date: 4.29.12



M I S C E L L A N E O U S
W A Y F I N D I N G S I G N S



Small Panel Type A:
(prototypes)



Medium Panel Type B

---V.P (Typical)



Large Panel Type C
(located at SE corner of Bell St. & Third Avenue)

---V.P Vinyl Print; Digital print to 3M control tac

Graphics are Digital Print applied to 3M control tac vinyl
Sign Panel Material : 1/8" alum. cut to size with eased corners
Colors to match PMS or Vinyl color as specified.

Font Name: "Futura MD "

NOTE:
Final copy will be
determined by the City of Edmonds

DIRECTORY **Vinyl Specifications** : Brand Name: Avery, 3M/Gerber

- V.1 3M Reflective White "
- V.2 3M Harvest Gold
- V.3 3M Reflective (Russet) Brown
- V.4 3M Duranodic
- V.5 3M Matte Black
- V.6 Avery Polo Green
- V.7 3M Satin Aluminum
- V.8 Avery Cocoa A 8278-O
- V.9 3M Copper
- V.P Vinyl Print; Digital 3M Color print to match duranodic



F O R M A

114 4th Ave N.
Edmonds, WA.
98020

Project:

City of Edmonds
Master Planned
Signage Program

Location:

City of Edmonds

Owner:

City of Edmonds

Designer

Clayton Moss

Cmoss@FormaSeattle.com

Direct Line: 425. 775. 2442

Fax Line: 425. 775. 2817

The objective of these drawings is
to define the overall design intent
for fabricator's understanding
and estimation purposes. These
drawings are only for
City of Edmonds sign projects.

Notes:

1. Written dimensions take
precedence over scale.
2. It is the responsibility of the sign
bidder/fabricator to thoroughly
examine all drawings, review site
conditions, and notify the designer
and owner of any errors, omissions, or
discrepancies prior to bid submittal
and start of production.
3. Concrete footing, engineering
specifications and installation-by owner
no bid required.
4. Final Artwork for logo provided
by FORMA.

Publish Date: 4.29.12

M I S C . W A Y F I N D I N G



P A R K S & R E C R E A T I O N



F O R M A

114 4th Ave N.
Edmonds, WA.
98020

Project:

City of Edmonds
Master Planned
Signage Program

Location:

City of Edmonds

Owner:

City of Edmonds

Designer

Clayton Moss

Cmoss@FormaSeattle.com

Direct Line: 425. 775. 2442

Fax Line: 425. 775. 2817

The objective of these drawings is to define the overall design intent for fabricator's understanding and estimation purposes. These drawings are only for City of Edmonds sign projects.

Notes:

- 1.Written dimensions take precedence over scale.
2. It is the responsibility of the sign bidder/fabricator to thoroughly examine all drawings, review site conditions, and notify the designer and owner of any errors, omissions, or discrepancies prior to bid submittal and start of production.
3. Concrete footing, engineering specifications and installation-by owner no bid required.
4. Final Artwork for logo provided by FORMA.

Publish Date: 4,29,12



FORMA

114 4th Ave N.
Edmonds, WA.
98020

Project:

City of Edmonds
Master Planned
Signage Program

Location:

City of Edmonds

Owner:

City of Edmonds

Designer

Clayton Moss

Cmoss@FormaSeattle.com

Direct Line: 425. 775. 2442

Fax Line: 425. 775. 2817

The objective of these drawings is to define the overall design intent for fabricator's understanding and estimation purposes. These drawings are only for City of Edmonds sign projects.

Notes:

- 1.Written dimensions take precedence over scale.
2. It is the responsibility of the sign bidder/fabricator to thoroughly examine all drawings, review site conditions, and notify the designer and owner of any errors, omissions, or discrepancies prior to bid submittal and start of production.
3. Concrete footing, engineering specifications and installation-by owner no bid required.
4. Final Artwork for logo provided by FORMA.

Publish Date: 4.29.12

FINISH SPECIFICATIONS -

Painted surfaces : Brand Name: Sherwin / Williams

- | | |
|---------------------|---------------------------|
| A Main Header panel | Leather Bound- earth tone |
| B Secondary panels | Jasper green |
| C Sign posts | Andiron- med. brown |

Vinyl surfaces: (Alternate to paint) Brand Name: Avery, or approved equal

- | | |
|-------------------------|-------------------|
| D Sign header alternate | Cocoa A 8278-O |
| E Sub panels alternate | Polo GreenA8695-O |

Vinyl lettering: specifications

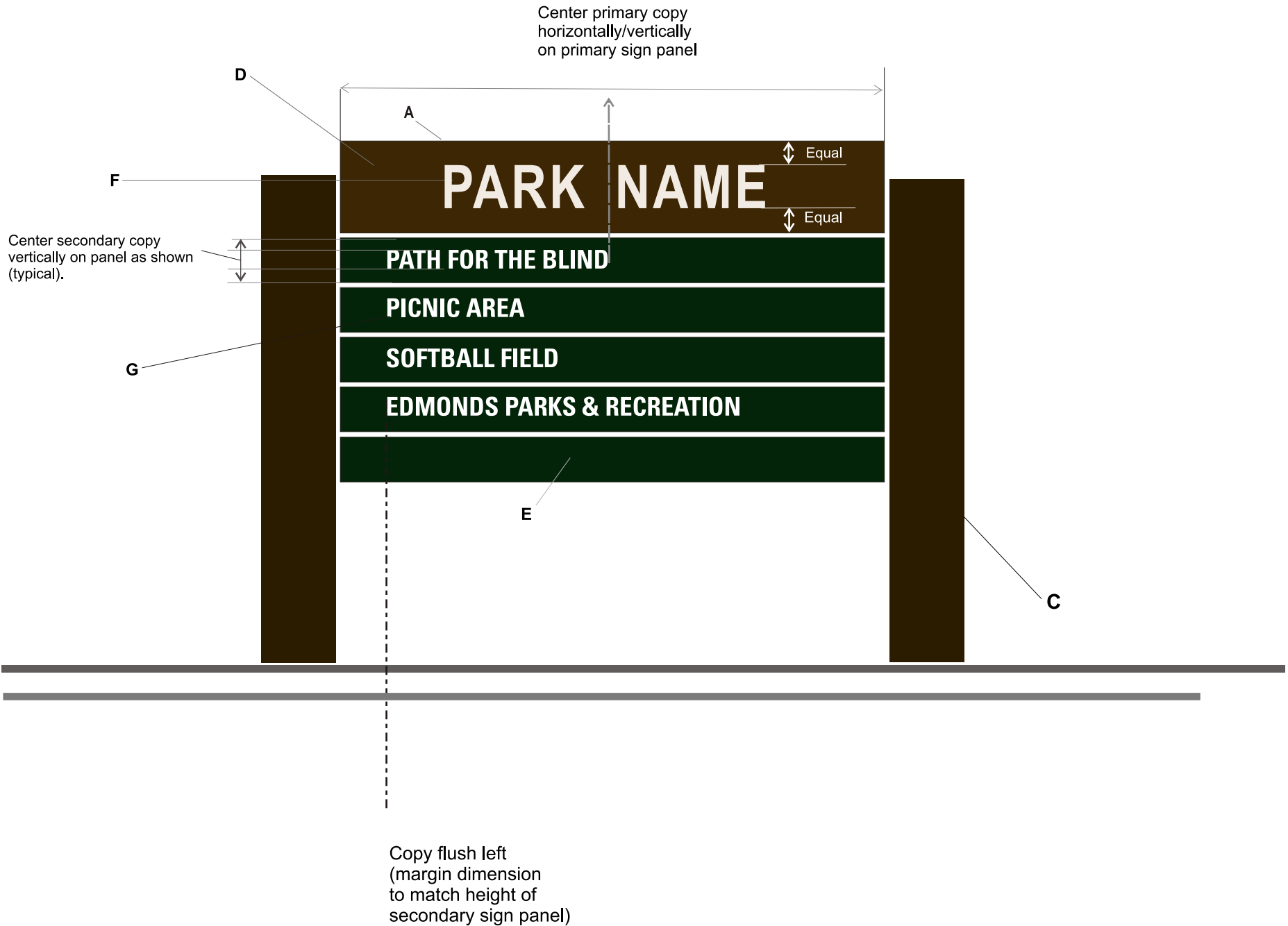
Vinyl : Brand Name: Avery or approved equal
Avery Specifications:

- | | |
|----------------------|---------------------------|
| F Primary Copy | Reflective White A7801-R. |
| G Secondary Copy | Light Grey A9001-O |

Font Name: "Arial Narrow-bold"

Graphic Notes: Sierra Park

- 1 Initial cap height greater as shown.
- 2 Kerning (one extra space between each letter, as shown.)
- 3 Layout all graphics as indicated





F R A N C E S
A N D E R S O N C E N T E R



F O R M A

114 4th Ave N.
Edmonds, WA.
98020

Project:

City of Edmonds
Master Planned
Signage Program

Location:

City of Edmonds

Owner:

City of Edmonds

Designer

Clayton Moss

Cmoss@FormaSeattle.com

Direct Line: 425, 775, 2442

Fax Line: 425, 775, 2817

The objective of these drawings is to define the overall design intent for fabricator's understanding and estimation purposes. These drawings are only for City of Edmonds sign projects.

Notes:

- 1.Written dimensions take precedence over scale.
- 2, It is the responsibility of the sign bidder/fabricator to thoroughly examine all drawings, review site conditions, and notify the designer and owner of any errors, omissions, or discrepancies prior to bid submittal and start of production.
3. Concrete footing, engineering specifications and installation-by owner no bid required.
4. Final Artwork for logo provided by FORMA.

Publish Date: 4.29.12



FORMA

114 4th Ave N.
Edmonds, WA.
98020

Project:

City of Edmonds
Master Planned
Signage Program

Location:

City of Edmonds

Owner:

City of Edmonds

Designer

Clayton Moss

Cmoss@FormaSeattle.com

Direct Line: 425. 775. 2442

ax Line: 425. 775. 2817

The objective of these drawings is to define the overall design intent for fabricator's understanding and estimation purposes. These drawings are only for City of Edmonds sign projects.

Notes:

- 1.Written dimensions take precedence over scale.
2. It is the responsibility of the sign bidder/fabricator to thoroughly examine all drawings, review site conditions, and notify the designer and owner of any errors, omissions, or discrepancies prior to bid submittal and start of production.
3. Concrete footing, engineering specifications and installation-by owner no bid required.
4. Final Artwork for logo provided by FORMA.

Publish Date: 4.29.12



MONUMENT : Front Elevation Scale: 1/2"=1'-0"

MONUMENT ; End View

A.1 Header (Address) Panel : 12'x 1'-2"x1'-1/2"

Face: cut out peak shape from 1/8"th. Alum.
attached to alum. fabricated tube frame structure with engineered adhesive.
Frame:1'-1/2" sq. tube & angles- welded construct.
Backside: natural alum. sanded frame and all visible metal. Upgrade: to enclose backside attach panel - spec to match face panel and color. (no lettering on backside)
Dimensional Address: Numerals & underline are cut out as one piece from .50 Plate Alum. Backsides of numerals are drilled & tapped. Attach numeral assembly to face panel with 1/4" dia. threaded rods. Pin off the surface 1/2" using sleeved stand-offs.

A.2 Graphic/Primary Panel : 16'x2'-6"x3"

Face:1/8" Alum.
Lettering: "Frances Anderson Center" routed thru face metal and backed with .063 alum. sheet. .063 Backer behind letter cut away has applied white reflective vinyl. Attach with engineered adhesive.
Lettering: "City of Edmonds..." with underline is vinyl applied to surface.
Frame: Rectangular shape structure made with standard 1'-1/2" alum sq. tube and angles - welded construct
Backside optional upgrade: enclose by attachment of sheet panel to frame- finish to match face.
Note: Accent green color below is applied vinyl.

A.3 Posts / Footing: 8"x10" By City of Edmonds

NOTE: Fabricator to adhere to design intent. Must submit shop drawing for approval by the City of Edmonds prior to start of production.

MONUMENT Vinyl Specifications : Brand Name: Avery, 3M/Gerber

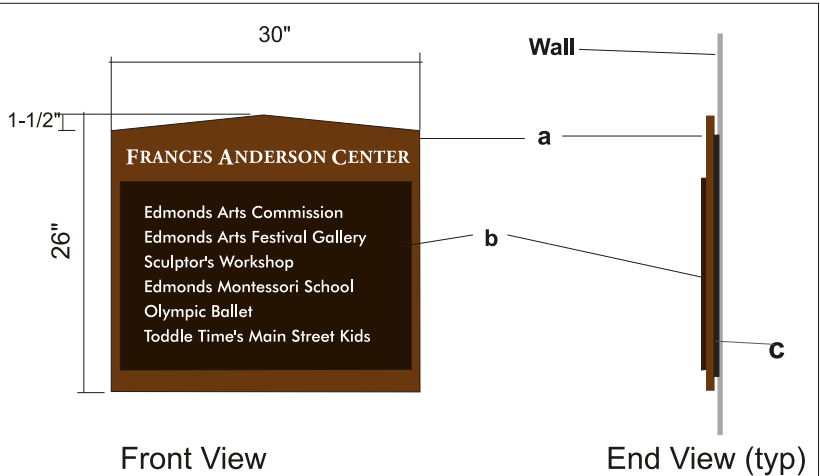
- | | | |
|--------|------------------------------|---|
| ---V.1 | 3M Reflective White | "FRANCES ANDERSON CENTER |
| ---V.2 | 3M Harvest Gold | |
| ---V.3 | 3M Reflective (Russet) Brown | |
| ---V.4 | 3M Duranodic | A.2 Primary Graphic Panel |
| ---V.5 | 3M Matte Black | |
| ---V.6 | Avery Polo Green | Green color band at base |
| ---V.7 | 3M Satin Aluminum | Address Numerals & "City of Edmonds..." |
| ---V.8 | Avery Cocoa A 8278-O | |
| ---V.9 | 3M Copper | A.1 Header |
| ---V.P | Vinyl Print; Digital 3M | |

FONT #1= GARAMOND (Adobe Garamond Pro as shown)
for " Frances Anderson Center" and address numerals
FONT #2= ARIAL NARROW BOLD for sub copy

DIRECTORY Vinyl Specifications : Brand Name: Avery, 3M/Gerber

Note: Non-Reflective White may be used

- | | | |
|--------|------------------------------|--|
| ---V.1 | 3M Reflective White | "FRANCES ANDERSON CENTER |
| ---V.2 | 3M Harvest Gold | |
| ---V.3 | 3M Reflective (Russet) Brown | |
| ---V.4 | 3M Duranodic | |
| ---V.5 | 3M Matte Black | |
| ---V.6 | Avery Polo Green | |
| ---V.7 | 3M Satin Aluminum | Address Numerals & City of Edmonds... |
| ---V.8 | Avery Cocoa A 8278-O | |
| ---V.9 | 3M Copper | a. Header |
| ---V.P | Vinyl Print; Digital 3M | b. Tenant name panel -White letters vinyl cut- or if too small order digital print |



Front View

End View (typ)

BUILDING DIRECTORY 1/2"=1'-0"
Wall mounted

6 name capacity as shown

Note: All Lettering reflective white

- a. Header Panel= 1/2" black composite with vinyl graphic applied-Font =Adobe Garamond
- b. Tenant Name Panel= 28"x 18" 1/4" black composite with digital vinyl print applied Font= Futura Med. Bd.
- c. Sign Backer 1/4" black composite.

Directory panels b+c mounted to wall with counter sunk screws & engineered adhesive.
Tenant Name Panel; attached to primary panel with engineered adhesive high bond DB tape.