

Edmonds Stormwater Planning Workshop



Public Workshops #1 and #2

February 22, 2023
12:00 - 1:00pm and
6:00 - 7:00pm

Welcome & Introductions



Project Team

Gretchen Muller



Patrick Johnson



Rebecca Dugopolski, PE



Mindy Fohn



Opening Remarks



Agenda

Time	Topic
10 minutes	Welcome & Introductions
5 minutes	Project Background & Schedule
15 minutes	Identified Actions
10 minutes	Q&A
15 minutes	Discussion
5 minutes	Wrap Up & Adjourn

Workshop Goals

- Provide a brief description of the project & schedule
- Review the watershed inventory and prioritization steps/results
- Present proposed stormwater management actions for the Perrinville Creek watershed
- Provide an opportunity to address clarifying questions
- Identify next steps and opportunities for feedback

Warmup Exercise

What are you interested in learning about today?

The image shows a meeting control bar with several buttons: Unmute, Start Video, Invite, Participants (with a '2' icon), Share Screen, Chat, Record, and Leave Meeting. Three callout boxes provide instructions for the Unmute, Start Video, Participants, and Chat buttons. The Unmute and Start Video callout explains that a red slash indicates audio is muted and video is off. The Participants callout explains that clicking opens a box for nonverbal feedback, which includes icons for 'raise hand', 'yes', 'no', 'go slower', and 'go faster'. The Chat callout explains that clicking opens a chat box for messaging.

Please leave your **audio muted** and **video off** (both indicated by a red slash).

Click to open the **Participants** box. This will allow you to give nonverbal feedback.

Click to open the **Chat** box. This will allow you to chat with Hosts and Participants.

raise hand yes no go slower go faster

To: Everyone More ▾
Type message here...

What is the Edmonds Stormwater
Planning Project?

Project Background



Photo courtesy of
myedmondsnews.com

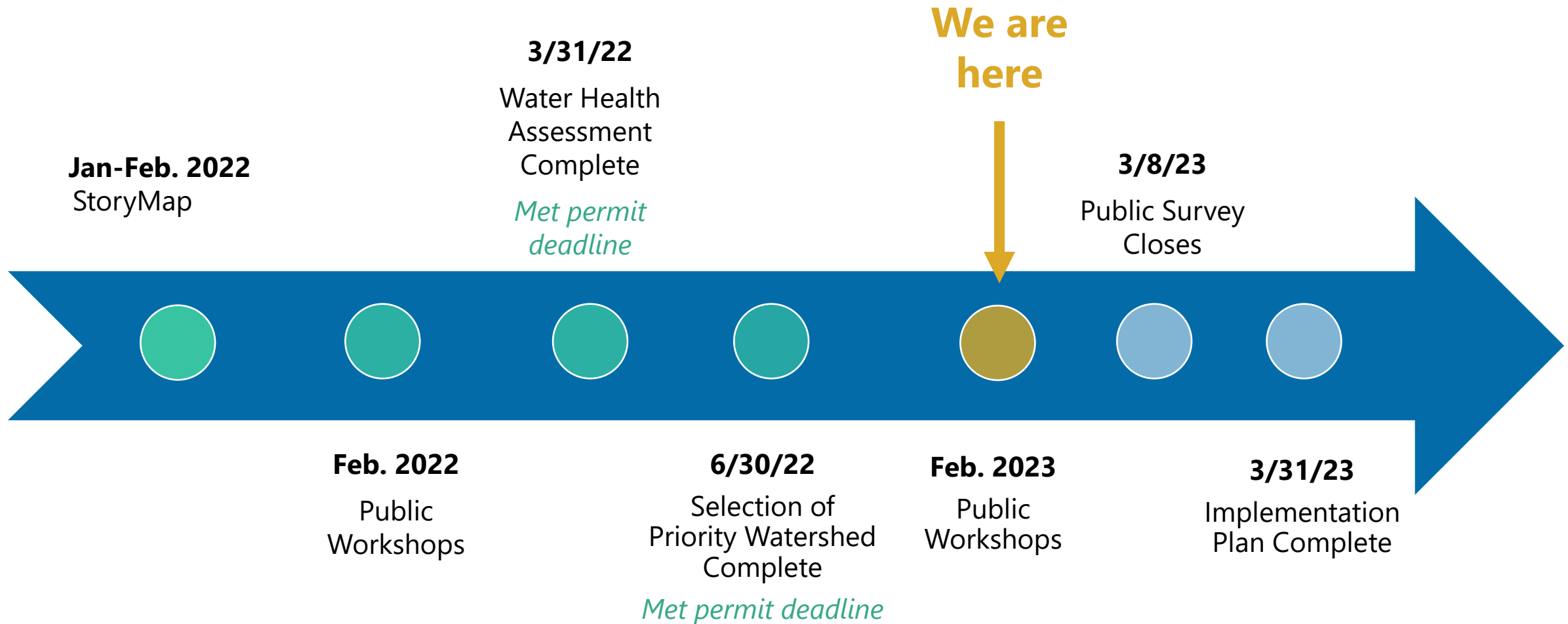
Driver: Municipal Stormwater Permit

- Stormwater planning requirements include a water health assessment, selecting a priority watershed, and developing an implementation plan

Public Input

- Workshops
- StoryMap and Survey

Project Schedule



Terminology

- **Waterway:** Marine water (Puget Sound), fresh water (streams, lakes)
- **Watershed (or basin):** Land area contributing to a waterway
- **Receiving water:** Where stormwater ends up (Puget Sound, streams, lakes, Edmonds Marsh)



Terminology

- **Hard (or impervious) surface:** Paved surfaces (roads, parking lots, driveways, sidewalks).
- **Ecosystem:** Natural resources utilized by wildlife and people
- **Stormwater:** Water that meets hard surfaces
- **Stormwater system:** Drainage conveyance (pipes, ditches) for stormwater



Stormwater conveyance
often leads to waterways

The Journey of Rain



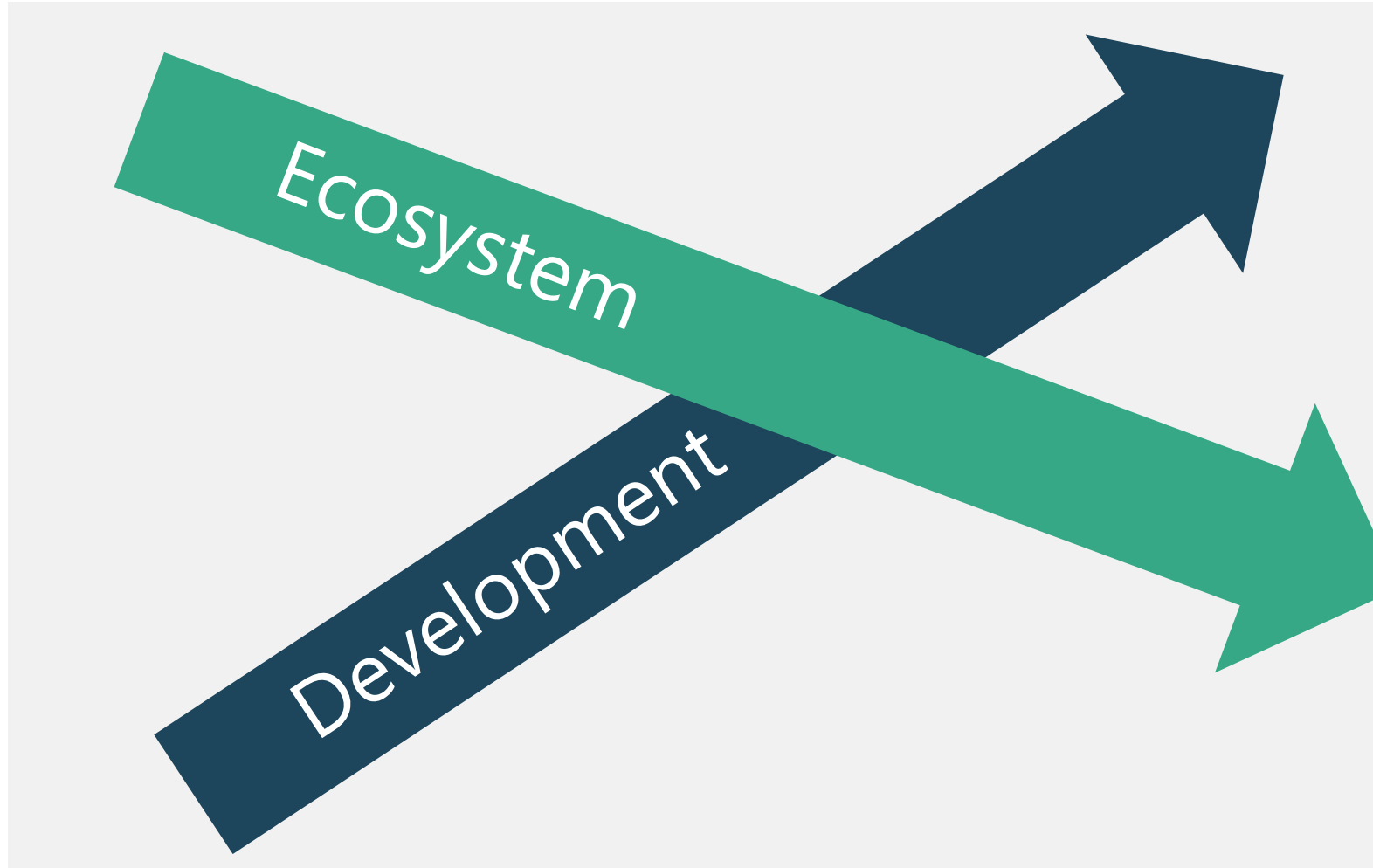
How were watersheds prioritized?

Watershed Focused Planning



Stormwater Planning Process

Relationship Between Development & Ecosystems



Ideal focus watershed:

- Moderate Development
- Moderate Waterway Health
- Actions more likely to result in ecosystem "lift"

Watershed Selection Framework



Water Use
Importance



Water and
Habitat
Conditions



Development
and Growth



- Within City
- Social Equity
- Coordination with Projects
- Public Input



Watershed Prioritization Process

Step 1. Develop List of Candidate Watersheds

9 Watersheds

Step 2. Evaluate Candidate Watersheds

6 Candidate Watersheds

Step 3. Evaluate *Restoration & Moderate Restoration* Watersheds

4 Watersheds

Step 4. Select Highest Priority Watershed & Catchment

1 Highest Priority Watershed

Jurisdiction control, social equity, public feedback, Promotes other plans/projects

Prioritization Process

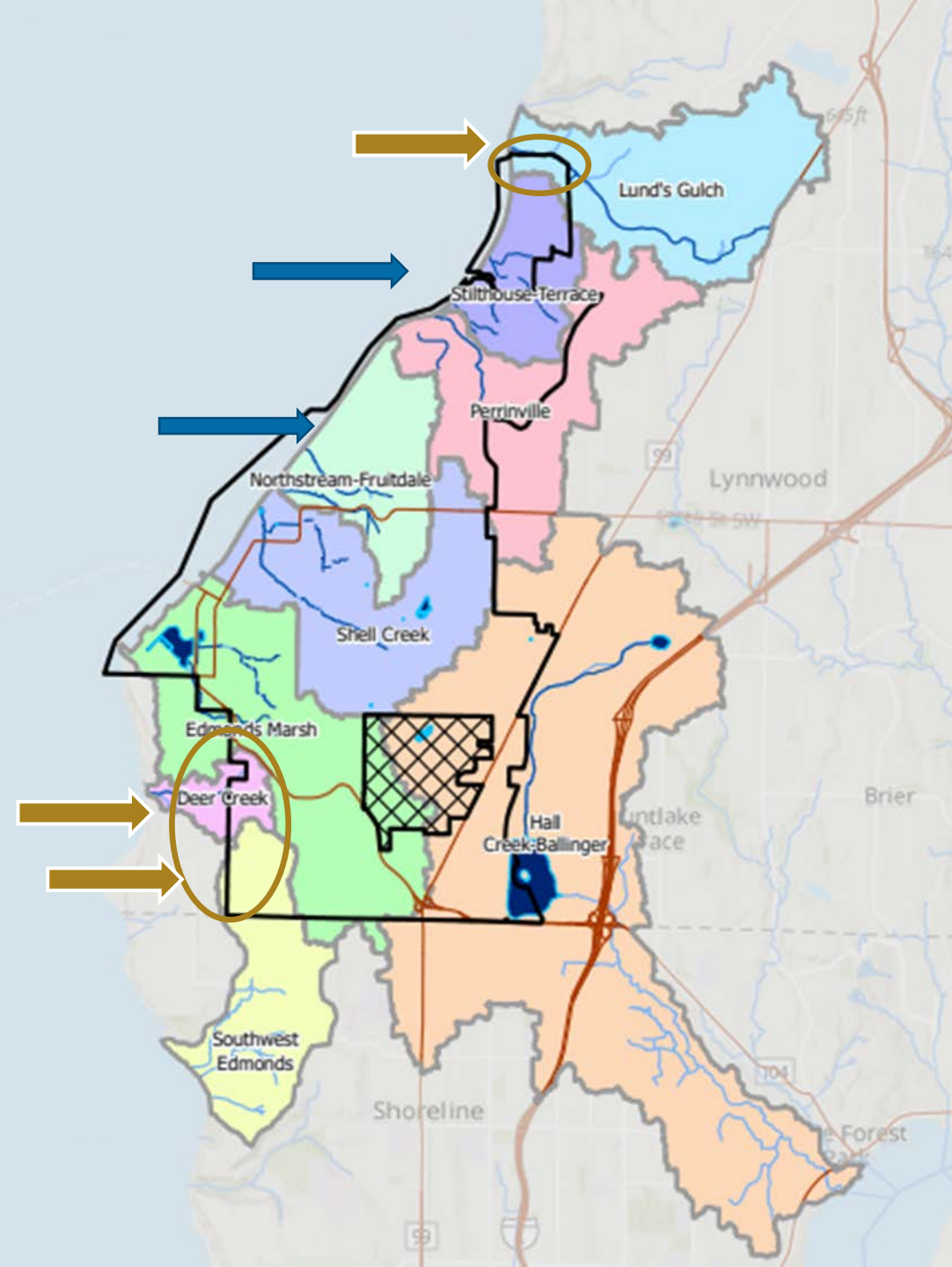
Deer Creek
Southwest Edmonds
Lund's Gulch

→ Too small, low City control

Northstream-Fruitdale Creeks
Stilthouse-Terrace Creeks

→ Higher Development
Low Water Use
Importance

- Edmonds Marsh
- Hall Creek-Lake Ballinger
- Perrinville Creek
- Shell Creek

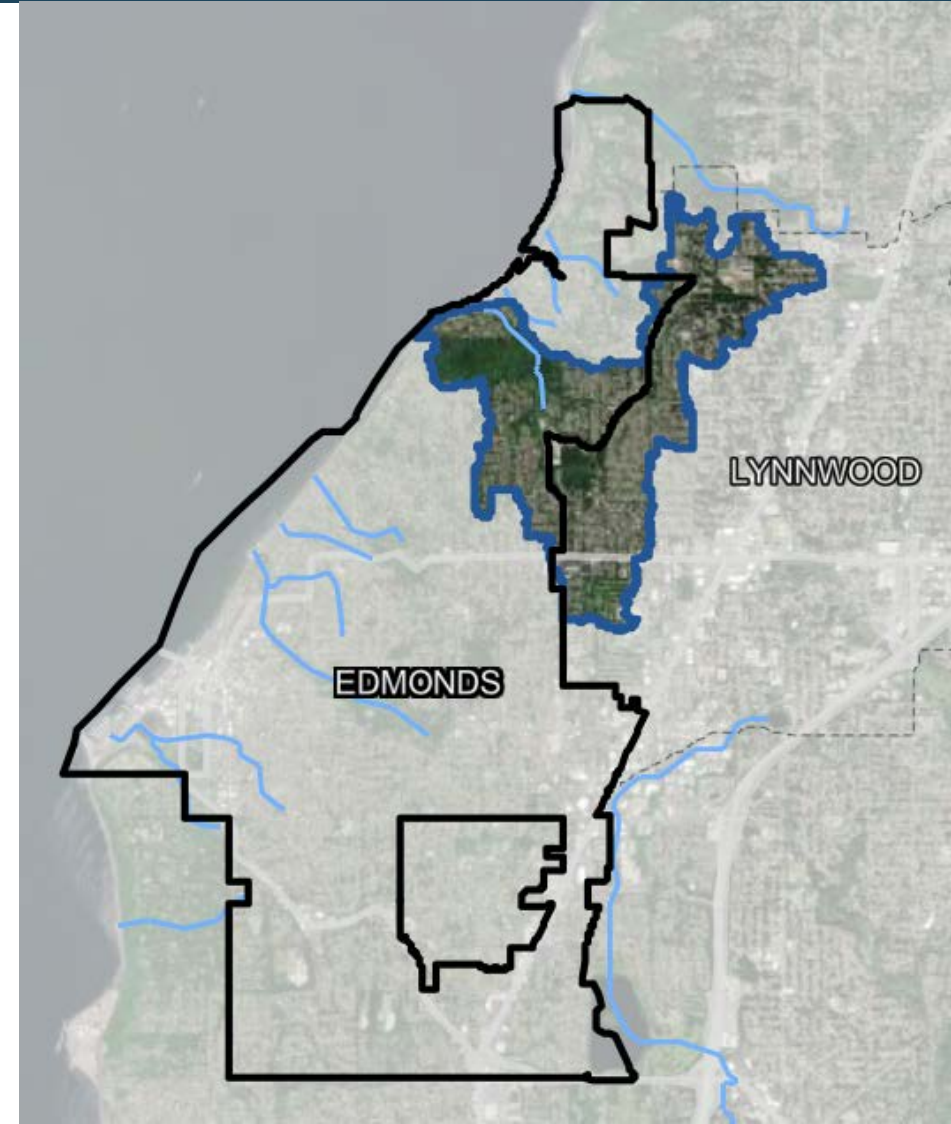
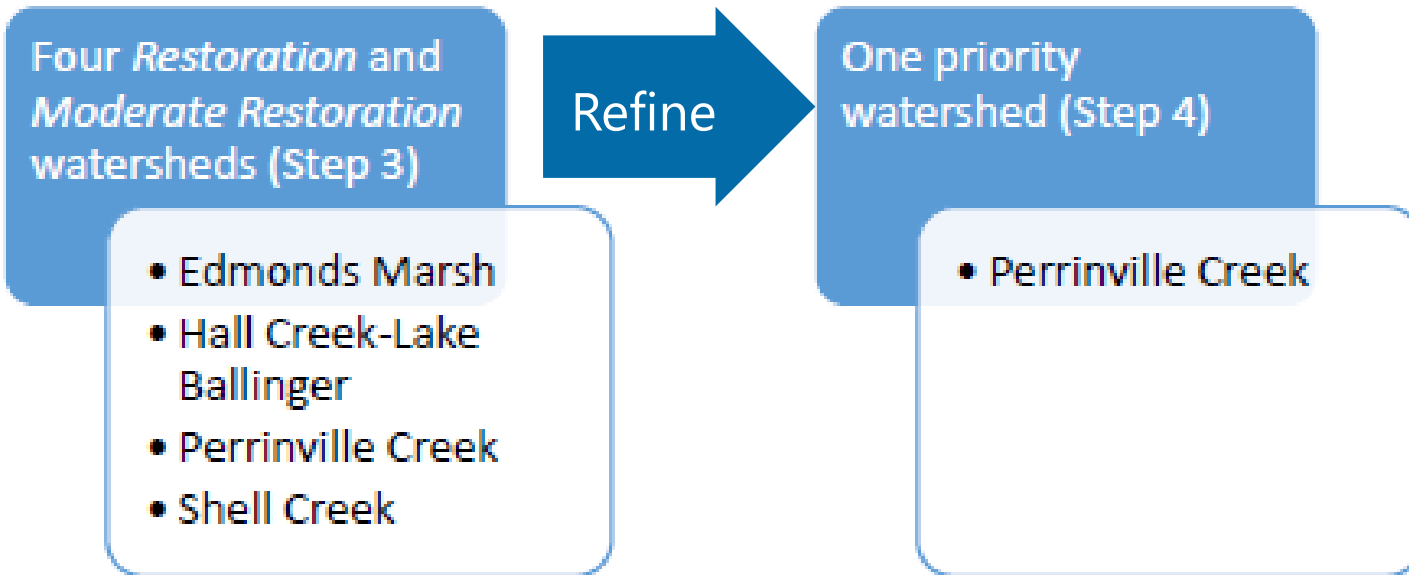


Prioritization Results

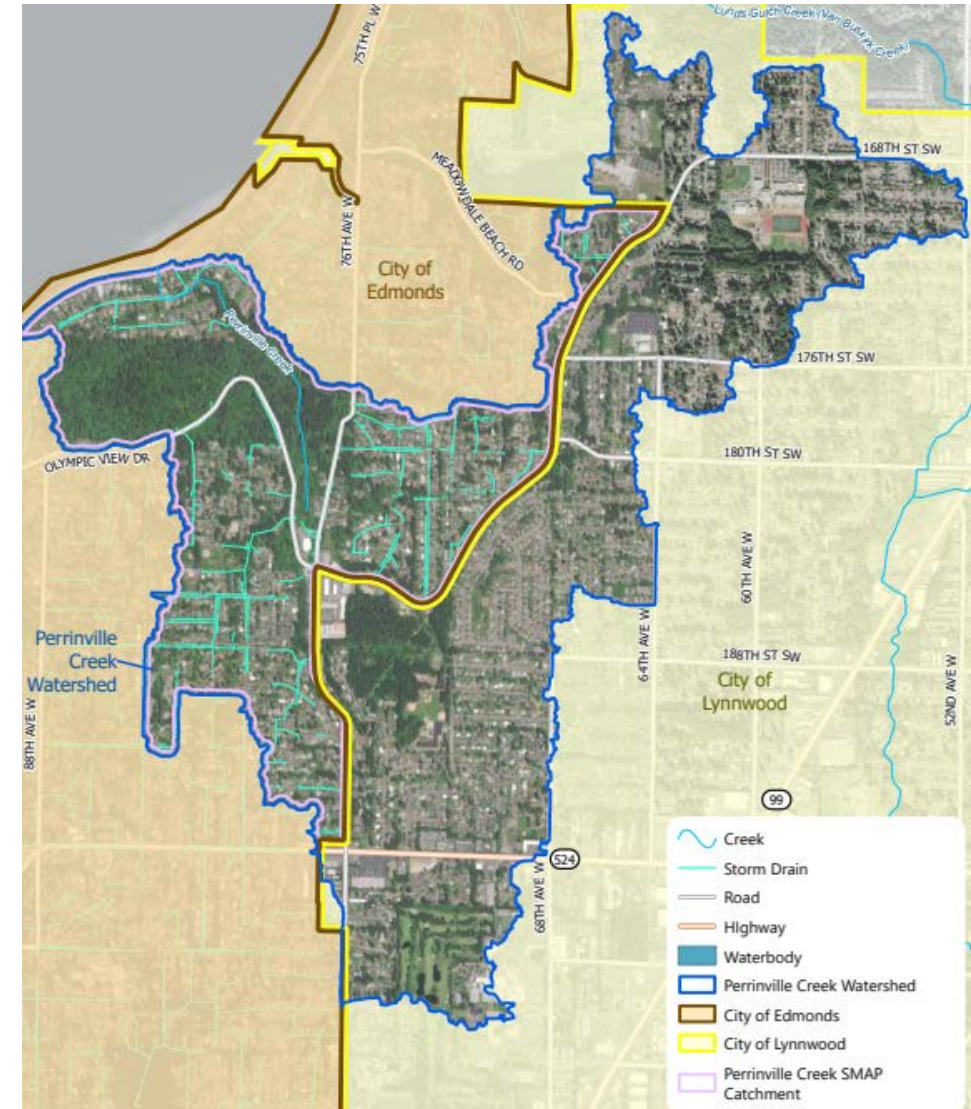
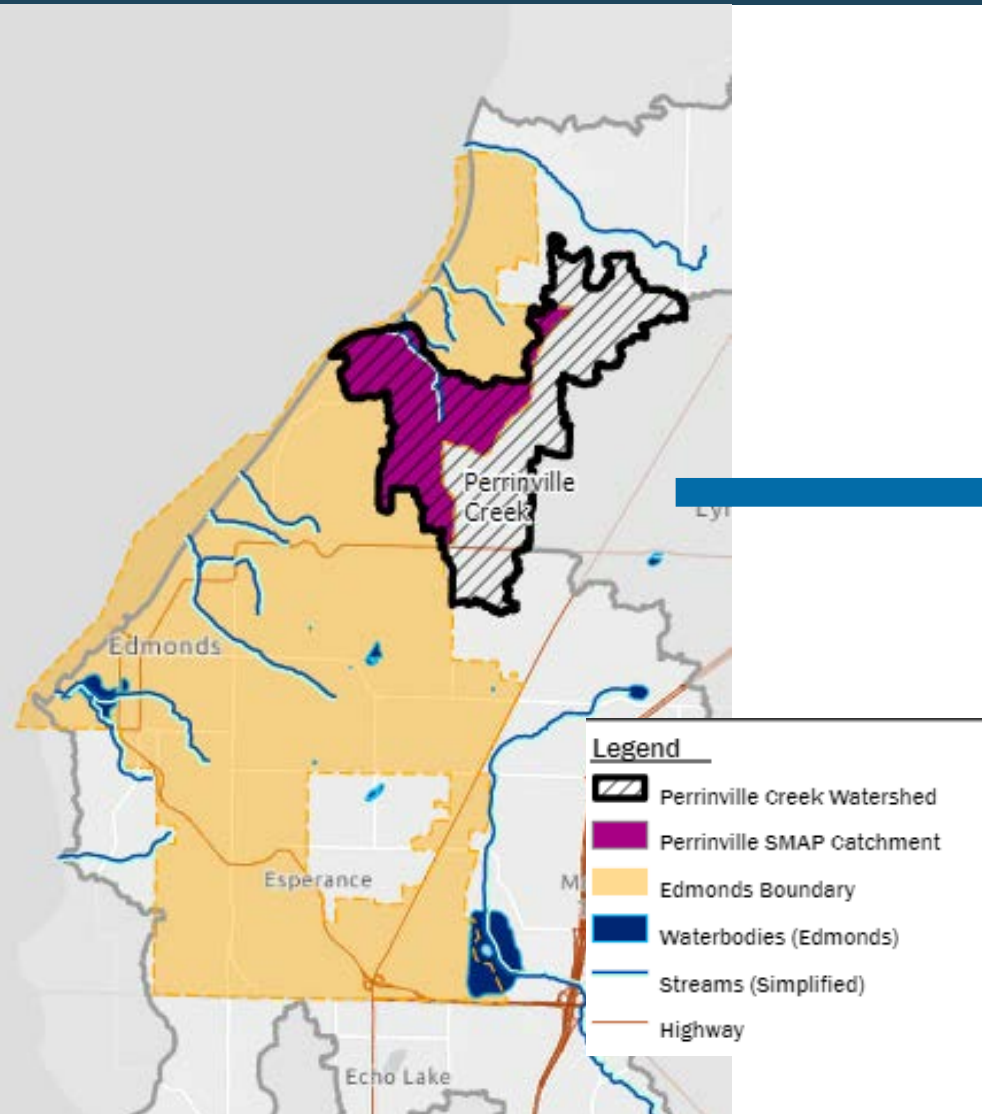
Watershed	Public Input	Social Equity	Retrofit Projects
Perrinville Creek	1st in public survey/ workshop	2nd for EHD composite score (upper basin ranked higher compared to lower basin)	<ul style="list-style-type: none"> • Seaview Infiltration Facility Phase 2 (2022-2023) • Perrinville Creek Retrofit Study (projects identified in 2015) • Perrinville Creek Recovery Project
Hall Creek – Ballinger	2nd in public survey/ workshop	1st for EHD composite score	<ul style="list-style-type: none"> • Ballinger Regional Stormwater Facility at Mathay Public Park (5-8 years) • Lake Ballinger Aquatic Ecosystem Restoration Project (planned for 2023)
Edmonds Marsh	3rd in public survey/ workshop	3rd for EHD composite score (upper basin ranked higher compared to lower basin)	Willow Creek Daylight and Marsh Enhancement Project (currently on hold)
Shell Creek	4th in public survey/ workshop	4th for EHD composite score	No stormwater retrofit projects identified

EHD=Environmental Health Disparity

Prioritization Results



Perrinville Creek Watershed Characteristics



What are the Completed and
Ongoing Stormwater Projects in the
Perrinville Creek Watershed?

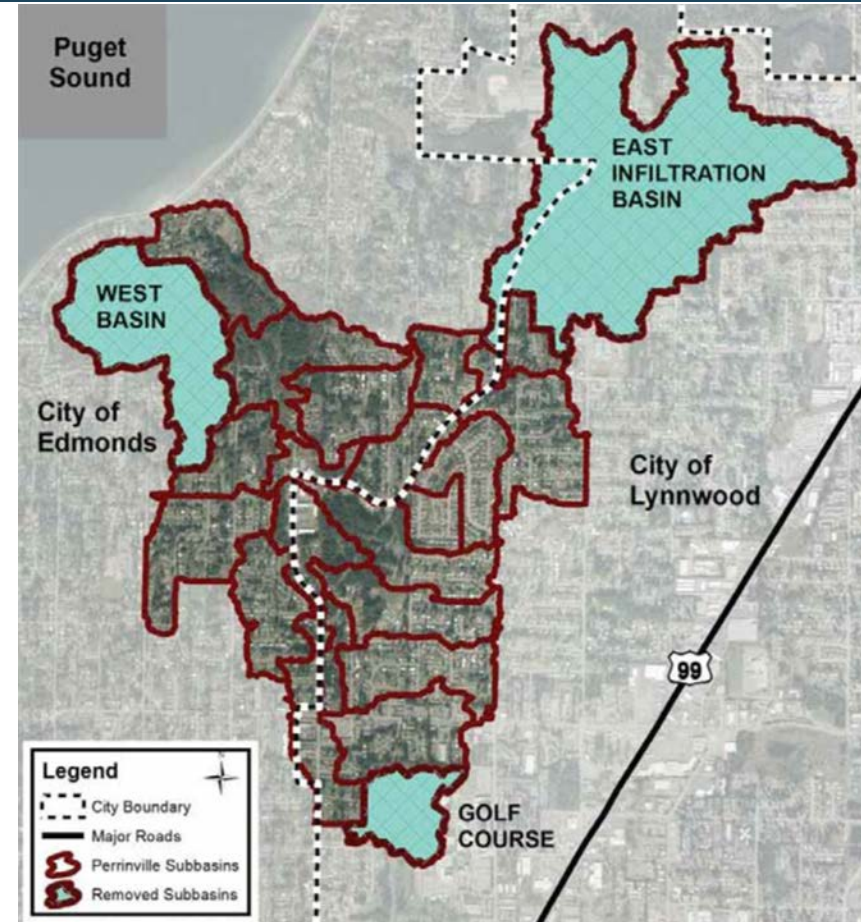
Completed Perrinville Creek Watershed Projects

Edmonds

- 2013 - Talbot Road Drainage Improvements/Perrinville Creek Study
- 2015 - Perrinville Flow Reduction Study
- 2015 - Dellwood & 191st Raingardens and Infiltration
- 2018 - Seaview Infiltration Facility (Phase 1)
- 2019-21 - 10 rain gardens with Snohomish Conservation District
- 2020 - 83rd Ave and 81st Ave Raingardens
- 2022 - Geomorphology Study

Lynnwood

- 2016 - Lynndale Park infiltration gallery
- 2016/2017 - Retrofit to the Blue Ridge Pond
- 2017 - Elementary School 100% infiltration
- 2017 - 12 rain gardens with the Snohomish Conservation District



Perrinville Basin Map from Tetra Tech study, 2015

Ongoing Perrinville Creek Watershed Projects

Edmonds: In Progress

- Seaview Infiltration Facility (Phase 2)
- 83rd Ave Rain Gardens (Phase 2)
- Update 2015 Perrinville Creek retrofit study (Edmonds portion of basin)
- Contract for Lower Perrinville project (at 60% design)
- Submitted grant applications for Lower Perrinville project
- Continue private rain garden program with Snohomish Conservation District
- **Identify additional actions for the SMAP (*today's workshop content*)**

What are the Identified Stormwater
Management Actions Under
Consideration?

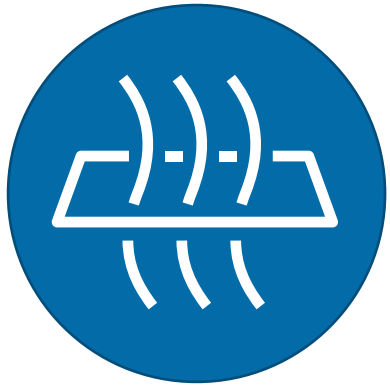
Categories of Stormwater Management Actions

- **Stormwater Facility Retrofits:** construction projects or feasibility studies
- **Land Management Strategies:** programs or policies addressing land use or zoning
- **Stormwater Program Enhancements:** public education and operations and maintenance activities above and beyond the Stormwater Permit requirements
- *Note: in-water work (i.e., culverts) not included*



City staff maintain a roadside rain garden

What are the Targets?



**Infiltrate
water**



**Reduce
pollutants**



Control flow



Photo courtesy of
Myedmondsnews

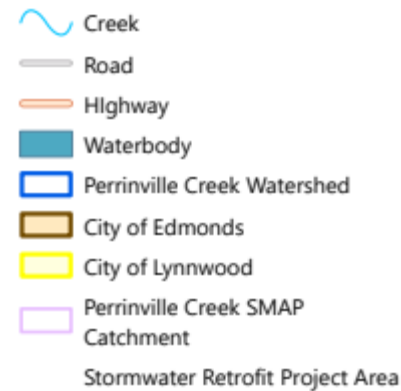
Stormwater Retrofit Projects

Perrinville 1 and 2 Neighborhood Retrofits

- Neighborhood Scale Retrofit Feasibility Analysis
- Community Outreach



Neighborhood style rain garden, example - 81st Ave.



Project Locations

179th Street/Olympic View Drive/
Ridge Way/72nd Avenue

188th Street/196th Street/Perrinville
Creek watershed boundary/
76th Avenue

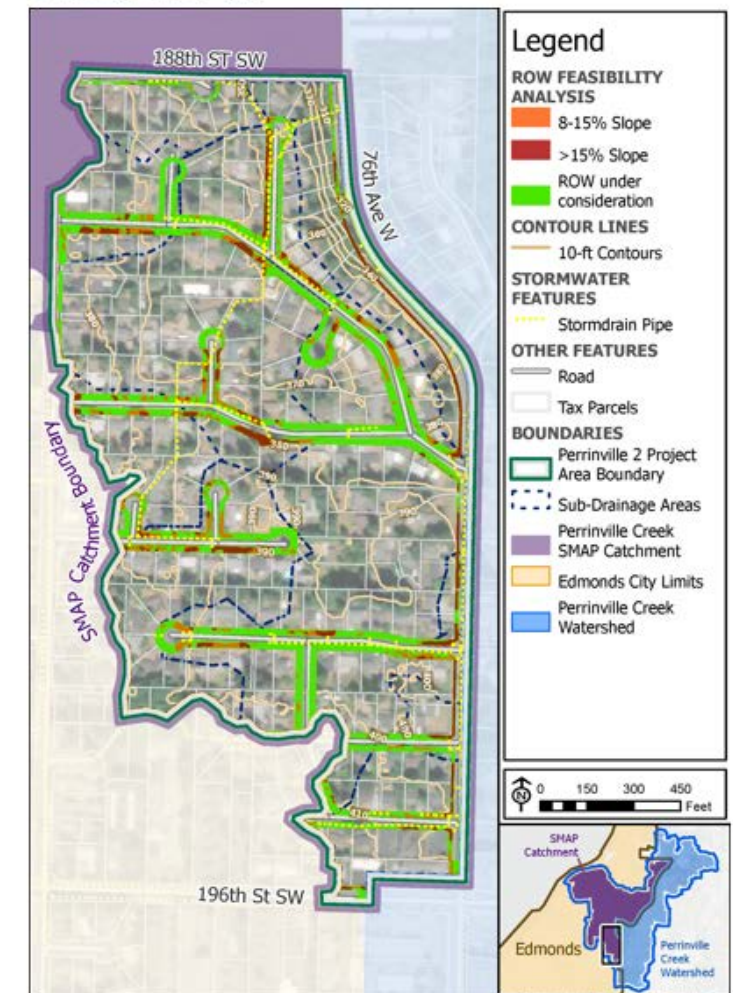


Example of Existing Conditions

Concept Site Plan



Concept Site Plan



Land Management Strategies

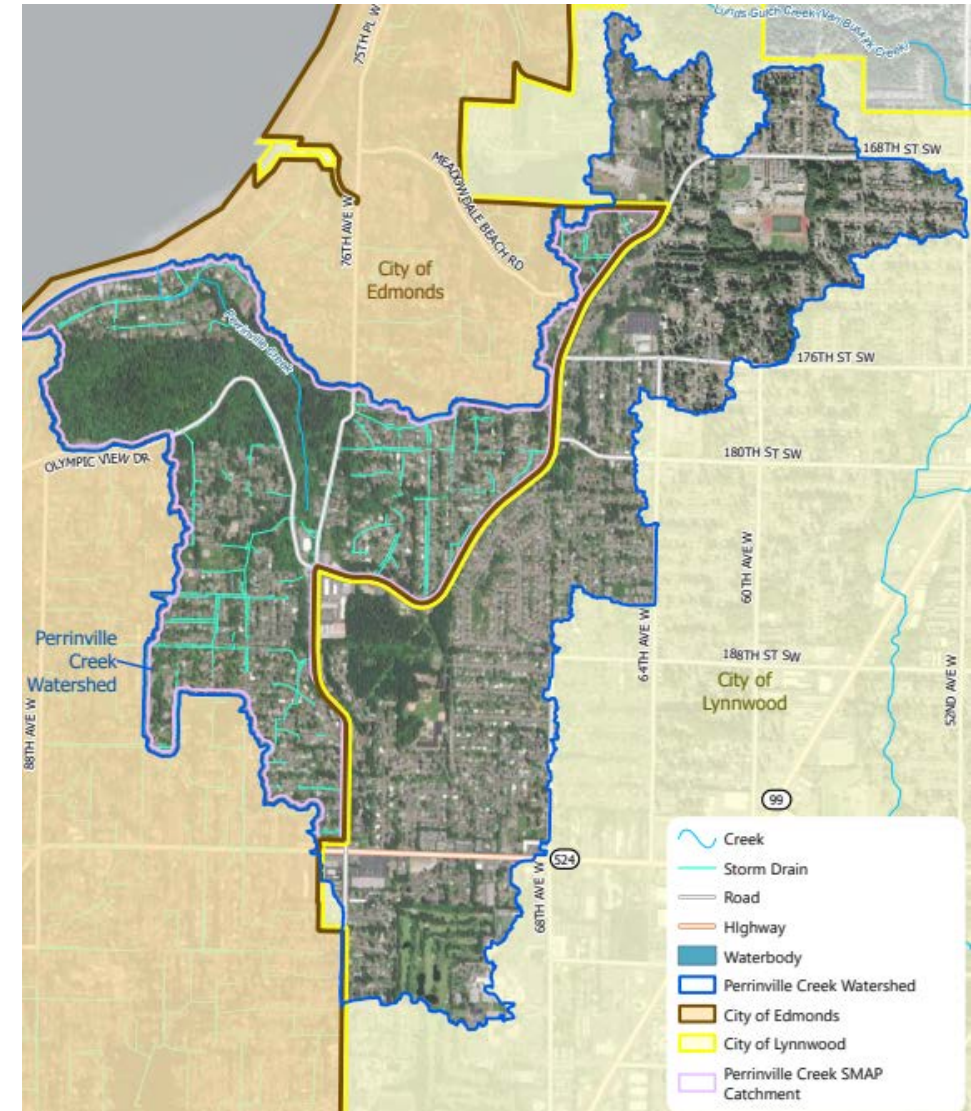
Stormwater Design Requirements

Strengthen
stormwater design
requirements for
redevelopment
targeting flow
control.



Collaboration with the City of Lynnwood

Work with the City of Lynnwood to find ways to control runoff from existing development in Lynnwood's portion of the watershed.



Identify “Depave” Projects

Identify hard surface areas (such as sections of parking lots or other paved areas) that are no longer of service to the property owner where pavement could be removed.



Streamside Landowner Technical Assistance

Provide technical assistance to streamside landowners regarding improving streams and/or runoff on their property.



Edmonds streamside planting and invasive plant removal event

Stormwater Program Enhancements

Homeowner Rain Gardens

Provide workshops and technical assistance for constructing rain gardens.



Conduct Annual Rain Barrel Event

Provide an opportunity for community members to conserve water resources and learn about stormwater runoff.



Public Education for Pet Waste Pickup

Implement a social media campaign to promote pet waste pickup.

A promotional graphic for pet waste pickup. It features a central image of a brown and white dog with its tongue out, set against a green background. To the left of the dog is an orange speech bubble containing the text "I POOP. You pick it up. Any questions?". To the right of the dog, the text "SCOOP PET POOP" is written in orange on a white background. Below this, on a blue background, is the text "Puget Sound Starts Here.org" with a white arrow pointing down to the word "Here".

I POOP.
You pick it up.
Any questions?

SCOOP PET POOP

Puget Sound
Starts Here.org

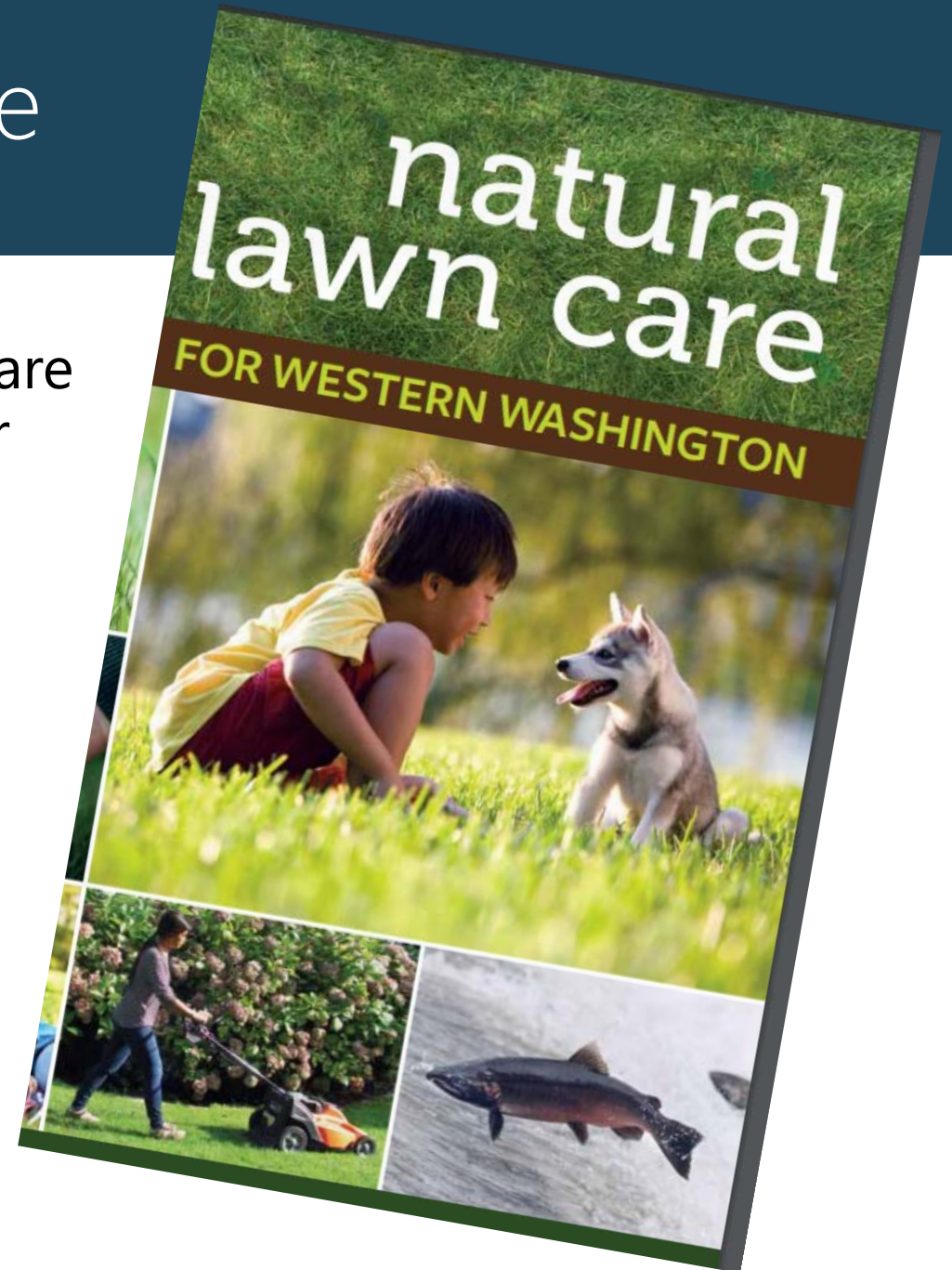
Puget Sound Starts Here regional promotional advertising

Promote Natural Yard Care

Develop and implement a natural yard care program through social media and other educational materials.



Puget Sound regional Natural Lawn Care resources



Train City Staff

Train City staff on green stormwater facility maintenance optimizing facility functions for flow control and water quality.



Edmonds Public Works staff
maintaining roadside rain garden

Summary List of Identified Actions

Stormwater Retrofit Projects

- Perrinville Neighborhood Scale Retrofit Feasibility Analysis: 179th Street/Olympic View Drive/Ridge Way/72nd Avenue
- Perrinville Neighborhood Scale Retrofit Feasibility Analysis: 188th Street/196th Street/Perrinville Creek watershed boundary/76th Avenue

Land Management Strategies

- Strengthen stormwater design requirements for redevelopment.
- Work with the City of Lynnwood
- Identify hard surface areas for depaving
- Streamside landowner technical assistance

Stormwater Program Enhancements

- Homeowner rain gardens
- Conduct annual rain barrel event
- Public education for pet waste pickup
- Promote natural yard care
- Train City staff on green stormwater facility maintenance



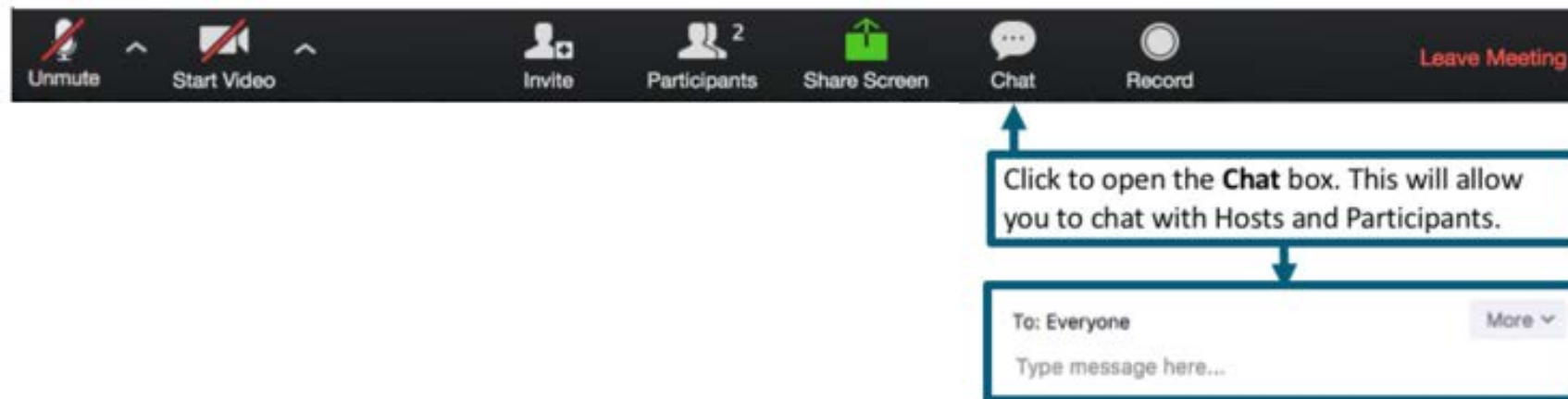
A blue-tinted photograph of a town square. In the center is a fountain with a decorative metal archway. To the left is a building with a sign that says "Several Styles". To the right is a building with a sign that says "LUCKS COFFEE". There are trees and a person walking in the background.

Q&A

Q&A

Do you have any questions on the content that we covered today?

- Project Background
- Project Schedule
- Key Findings
- Stormwater Actions



A blue-tinted photograph of a beach at sunset. The sky is filled with soft, wispy clouds, and the sun is low on the horizon, creating a bright glow over the water. In the foreground, two children are in silhouette. One child is standing on the right, looking out at the water, while the other is sitting on the left, also looking towards the sea. The water is calm with gentle ripples, and the overall mood is peaceful and contemplative.

Discussion

Stormwater Action Poll

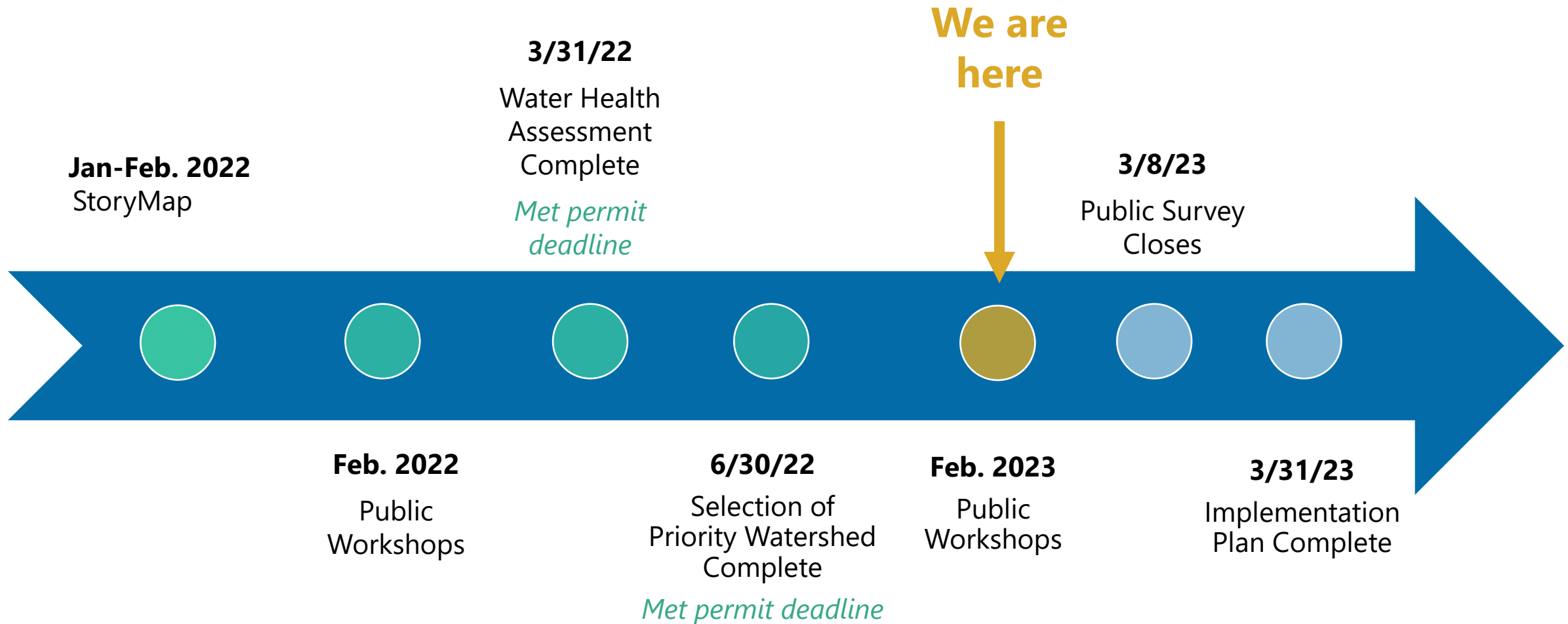
Select the **top three actions** most important to you:

- Strengthen stormwater design requirements for redevelopment
- Work with the City of Lynnwood to control flows in the upper watershed
- Identify hard surface areas where pavement could be removed
- Provide technical assistance to streamside landowners
- Provide workshops and technical assistance for constructing rain gardens
- Conduct annual rain barrel event
- Implement a social media campaign to promote pet waste pickup
- Develop and implement a natural yard care program
- Train City staff on green stormwater facility maintenance



What's Next?

Project Schedule Recap



Visit the Project Web Page

- Relevant documents
- Workshop slides and recording
 - February 2022
 - February 2023 (posted soon)
- StoryMap
- Public Survey



STORMWATER UTILITY SYSTEM

Phase II Municipal Stormwater Permit Compliance (NPDES)

Stormwater Public Education & Outreach

Storm & Surface Water Documents

Stormwater System Maintenance

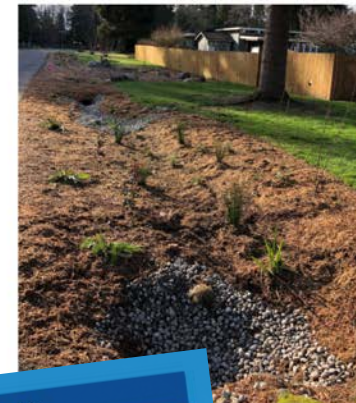
Lake Ballinger Water Level

Stormwater Utility Bill

Stormwater Management Action Planning (2022-2023)

[City of Edmonds, WA](#) / [Government](#) / [Departments](#) / [Public Works and Utilities](#) / [Stormwater Utility System](#) / Stormwater Management Action Planning (2022-2023)

STORMWATER MANAGEMENT ACTION PLANNING (2022-2023)



PROJECT MANAGERS:

Patrick Johnson
Sr. Stormwater Engineer
pat.johnson@edmonds.gov
(425) 771-0220, x1

Jerry Shuster
Stormwater Engineer
jerry.shuster@edmonds.gov
(425) 771-0220

Si tiene problemas con este sitio web, puede contactarnos en español. Si necesita ayuda para usar este sitio web, puede contactarnos en español. pat.johnson@edmonds.gov o llámanos al (425) 771-0220.

If you have a problem with this website, you can contact us in Spanish. If you need help using this website, you can contact us in Spanish. pat.johnson@edmonds.gov or call us at (425) 771-0220.

Perrinville Creek Improvement Projects Feedback

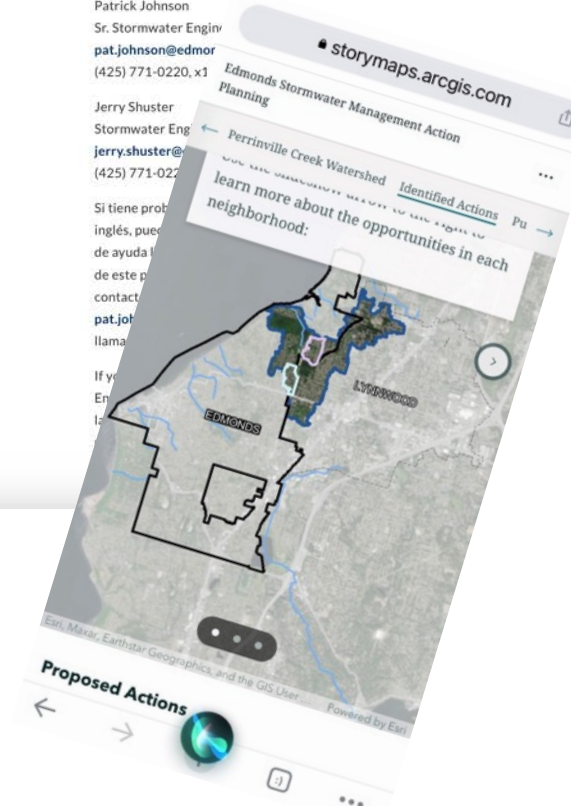
We would appreciate your feedback on which stormwater management actions you think would be the most important to improving conditions in Perrinville Creek.

Please use the following two questions to rank the proposed strategies and actions in order of importance.

Rank the proposed land management strategies in order of importance:

- Provide technical assistance to streamside landowners regarding improving streams and/or runoff on their property.
- Work with the City of Lynnwood to find ways to control runoff from existing

ation Info



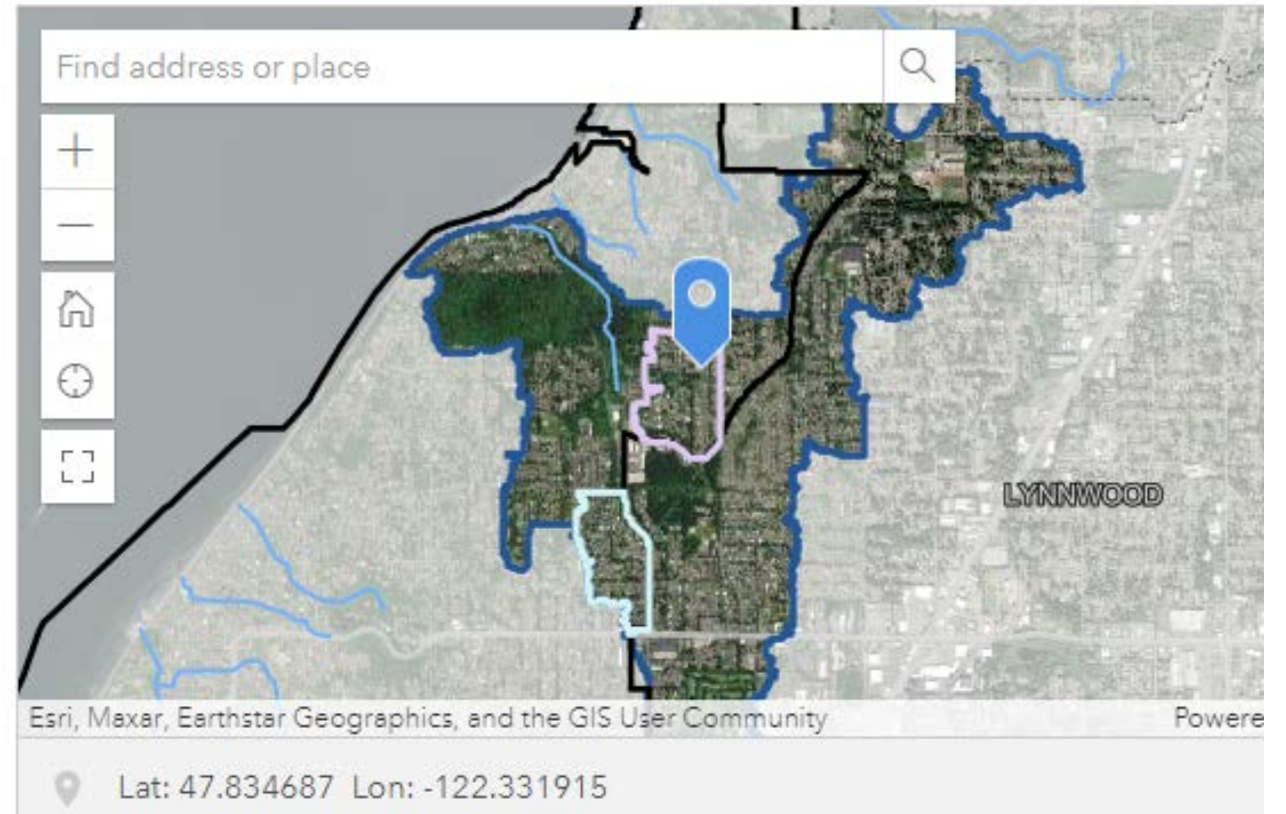
Public Survey

Opportunity to:

- List other strategies or actions
- Add areas for consideration for potential stormwater facility retrofit projects

Click any spot on the map below to move the point to that location.

Please submit additional surveys if you would like to identify multiple locations.



Thank You

Contact

Pat Johnson

pat.johnson@edmondswa.gov

425-771-0220